



DpuScan

Janich & Klass
Computertechnik GmbH



DpuEnterpriseManager 7

Reference Manual

Copyrights

© 1997 to 2024 © Janich & Klass Computertechnik GmbH. All rights reserved.
Printed in Germany. The information contained in this documentation is the property of © Janich & Klass Computertechnik GmbH, Wuppertal. Neither receipt nor possession hereof confers or transfers any right to reproduce or disclose any part of the contents hereof, without the prior written consent of Janich & Klass, Wuppertal

Trademarks

The DPU logo is a registered trademark of © Janich & Klass Computertechnik GmbH. All other product names and logos are trademarks or registered trademarks of their representative companies.

Disclaimer

The instructions and descriptions in this manual were accurate at the time of this manual's printing. However, we reserve the right to alter the description and/or the product at anytime without prior notice. As per the actual state of software technique it is not possible to develop programs that will work trouble-free under all conditions and in any configuration. © Janich & Klass Computertechnik GmbH assume no liability for damages incurred directly or indirectly from errors, omissions, or discrepancies between this manual and the product.

Actuality

It may happen that a more recent version of this manual for DpuScan is available for download from the Internet. Therefore, it is recommended that you should compare the version by means of the date printed on this page with the version on the Internet. You should please use the most up-to-date version of the manual. The actual version of this First Steps Manual is found on the Web at the following address:

https://www.dpuscan.com/pdf/en_manual/DpuScan-Reference-Manual.pdf

Table of Contents

| | |
|----------------------------------|-----------|
| 1 The System DpuScan | 5 |
| 2 DpuEnterpriseManager | 7 |
| 2.1 Menu | 8 |
| 2.2 Toolbar | 11 |
| 2.3 Local Administration | 13 |
| 2.3.1 Local Status | 13 |
| 2.3.2 Migration | 15 |
| Columns | 15 |
| Buttons | 15 |
| 2.3.3 License Management | 17 |
| Columns | 17 |
| Buttons | 18 |
| 2.3.4 Rights Management | 20 |
| Columns | 20 |
| Buttons | 21 |
| 2.3.5 Profile Management | 23 |
| Columns | 24 |
| Buttons | 26 |
| 2.3.6 Global Variables | 29 |
| Columns | 29 |
| Buttons | 29 |
| 2.3.7 Global Counters | 31 |
| Columns | 31 |
| Schaltflächen | 31 |
| 2.4 Manage Remote Servers | 33 |
| 2.4.1 Server Status | 34 |
| 2.4.2 License Management | 35 |
| Columns | 35 |
| Buttons | 36 |
| 2.4.3 Rights Management | 37 |
| Columns | 37 |
| Buttons | 37 |
| 2.4.4 Profile Management | 39 |
| Columns | 39 |
| Buttons | 40 |
| 2.4.5 Group Management | 42 |
| Groups | 42 |
| Add a group | 44 |
| Stations | 44 |
| Assign Stations | 46 |
| Profiles | 47 |
| Assign Profiles | 48 |
| Licenses | 49 |
| Lizenzen hinzufügen | 49 |
| 2.4.6 Global Variables | 51 |
| Columns | 51 |
| Buttons | 51 |
| 2.4.7 Global Counters | 53 |
| Columns | 53 |
| Buttons | 53 |
| 2.4.8 Logging | 55 |
| Columns | 55 |
| Buttons | 55 |
| 2.5 Program Settings | 57 |
| 2.6 Options | 59 |
| 2.7 Other | 61 |
| 2.7.1 Administration mode | 61 |

| | |
|---|----|
| 2.7.2 Command Line Parameters | 61 |
| 2.7.3 Colors | 62 |
| 2.7.4 Registration | 62 |
| 2.7.5 Entering a key | 63 |
| 2.7.6 Select a DpuServer for publishing | 64 |
| 2.7.7 Start the Program with Administrator Rights | 64 |

1 The System DpuScan

The **DpuEnterpriseManager** is a tool to easily manage scan profiles, user rights and licenses. In an environment with DpuServer, DpuEnterpriseManager also sets rules for distributing profiles, rights and licenses to several scanning stations.

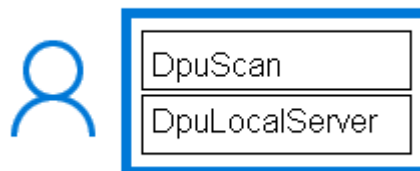
How the DpuEnterpriseManager works in details depends on the installation type of DpuScan.

The scan application can be set up as a stand-alone application for one or more users.

The scan application uses the DpuLocalServer service to save the settings.

The scan application can also be set up as a client on a DpuServer. In this case the DpuLocalServer service takes over the communication with the DpuServer. The DpuServer in turn uses a database to save the settings.

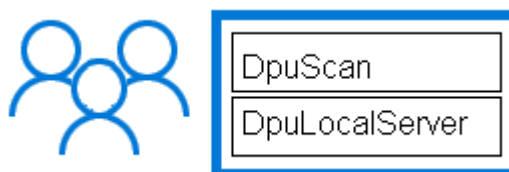
Common profile storage for all users: All users use the same settings.



Separate Profile per User, each user has their own settings.

Profiles can be made available to others, that is called "Publish locally"

Provided profiles can be taken over, "adjust locally"

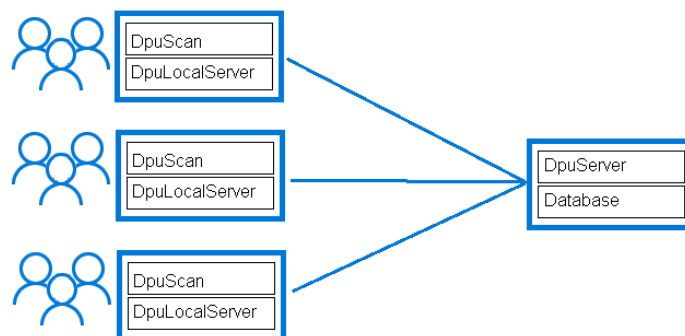


DpuServer Storage of the profiles, several stations obtain the profiles from a central DpuServer.

It can be determined whether the individual users can keep changes as local profiles.

Profiles can be copied to the DpuServer, "publish"

Profiles can be updated automatically by the DpuServer, "Adjust"



Licensing is required to operate the scan application.

This can be done by using certain hardware, registering the computer or connecting to a DpuServer.

The settings required for the work processes are stored in so-called **profiles**. Profiles can be saved locally and exchanged between different users. When operating a DpuServer, this also goes beyond station boundaries.

Since it sometimes does not make sense to allow the operator to use all functions of the program, this can be restricted by assigning **rights**.

Certain stations can be grouped together on the DpuServer, which have access to certain licenses and profiles.

In addition, the DpuServer can also keep global **counters** and **texts**, e.g. generate a unique batch name in the network.

The DpuServer is usually operated on a separate computer and does not have its own program interface.

Both configurations and licenses can be managed on a server. This makes it possible to distribute the existing licenses in the form of so-called floating licenses. So individual clients request dynamic licenses and the server operates them according to the rules and existing licenses.

The configuration and licenses are managed with the DpuEnterpriseManager.

The DpuEnterpriseManager is part of the scan application and is installed together with it.

2 DpuEnterpriseManager

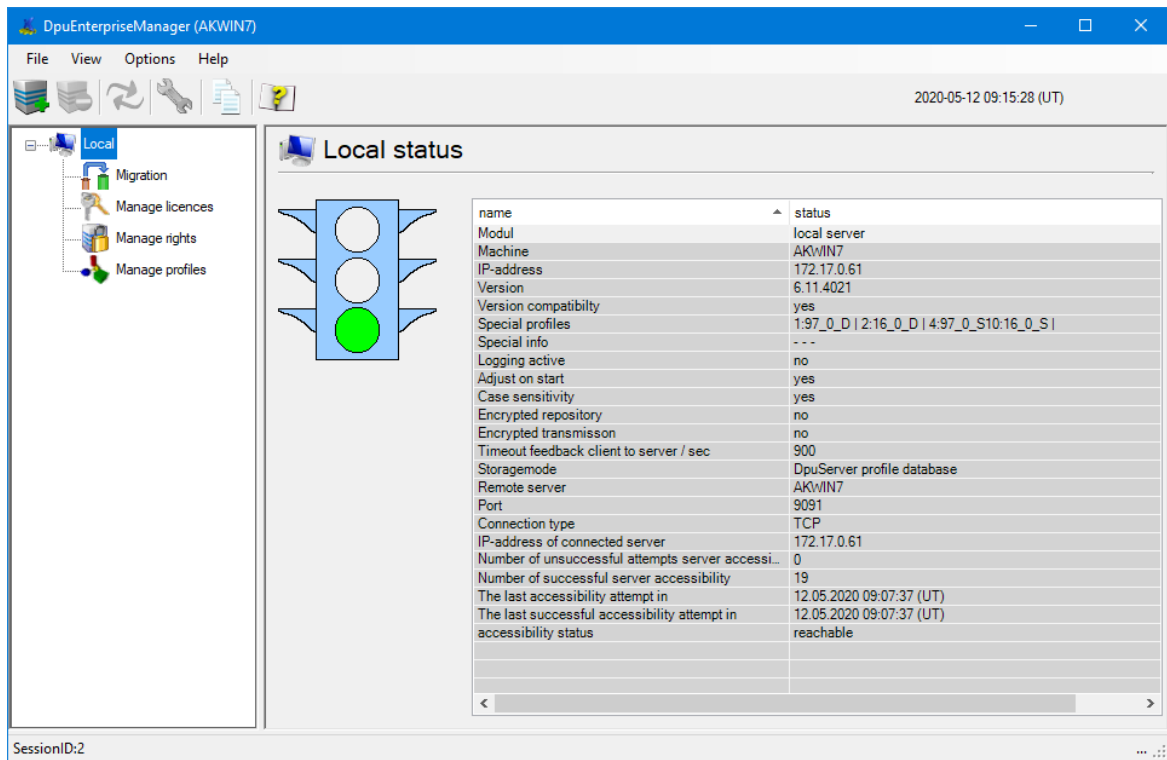
The DpuEnterpriseManager is a program located in the DpuScan program folder. It can be started from the entry in the start menu, from the [command line](#) prompt or simply by a double click on the icon. The DpuEnterpriseManager has a graphical user interface.

It shows in the title bar on which station it is running. It has a [menu](#) and a [toolbar](#).

The working area is divided into two areas. The division can be changed by moving the mouse while pressing the mouse button.

In the left area there is a tree structure. The [Local node](#) is always displayed here.

There may be other nodes for one or more [DpuServers](#). Each node in the tree has its own window, which is shown in the right area.



Benutzeroberfläche des DpuEnterpriseManager

The status bar at the bottom shows the actual session number. If the Scan-Application runs at the simultaneously, a warning will be displayed here:

Right now the program DpuScan is running. Therefore some functions are limited.

Then for example profiles cannot be deleted or rights cannot be changed.

2.1 Menu

The DpuEnterpriseManager uses a dynamic menu for the most important tasks. Depending on the selected node, parts of the menu are shown or hidden.

File



Add new Server

Ctrl-N Opens a dialog for the connection to a new DpuServer:

Connection Settings

To do this, enter the name or IP address of the computer on which the DpuServer service is running.

Unless there are no system policies prohibiting this, leave the port at 9091.

Select the connection type with which this DpuServer communicates with its clients.

For a new installation, select WCF for DpuScan 6 and WSE for DpuScan 5.

By the way, it is not necessary that the server is currently available.



Remove Server

Ctrl-Del

Cancels the DEM's connection to this DpuServer. This has no effect for connection of the local DpuScan



Close

Closes the DpuEnterpriseManager

Edit

This menu is only displayed for the [DpuServer-> Profile](#) management node.

It refers to the situation of adjusting, i.e. when profiles are copied from the DpuServer to the scan station.

Copy always

Specifies that an existing profile in the global area of the client station is always overwritten when comparing.

Copy if newer Specifies that an existing profile in the global area of the client station is only overwritten if the profile from the DpuServer is newer.

Keep user profile Specifies that existing copies of the profile just transferred remain in the user area. Changes made to the profile by the operator are retained.

Remove user profile Specifies that existing copies of the profile just transferred are deleted from the user area. Changes that the user has made are thus discarded. He then works again with the originally published profiles.

View

Update F5 Updates the view on the right side. for example the used licenses.

Options



Options Opens the mostly used [option dialog](#) for the currently selected node.



Preferences Opens the dialog box for the [preferences of the program](#) like time format, export, print options and so on..

Settings

View settings

Show dates in local time

DAT-Export

export all

DAT-Import

Task variables

Class variables

Warning before import

copy

Format

filling character

delimiter

print

black-white

gridlines

table header

Margins

left margin mm

right margin mm

upper margin mm

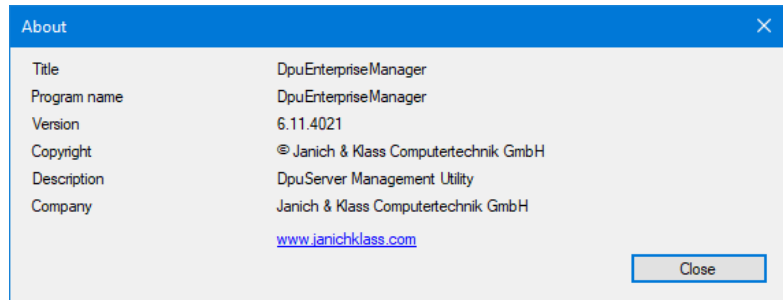
lower margin mm

Apply Cancel

Settings

Help

- Content** F1 Opens the help, starting with the topic [content](#)
- Index** Opens the help, on the page "Index".
- Search** Opens the help, on the page "Search".
- Info...** Shows the program information::



Version information

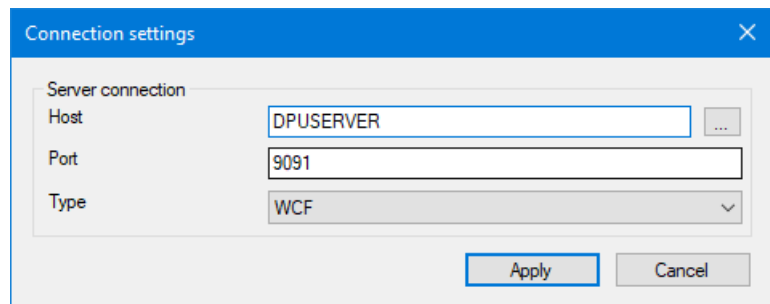
See also [toolbar](#) and [DpuEnterpriseManager](#).

2.2 Toolbar

Under the menu bar, the DpuEnterpriseManager shows a button bar for the most important functions. This bar is also dynamic, i.e. Depending on the selected node in the tree view, buttons are switched on or off.



Add new server to list Opens a dialog for the connection to a new DpuServer:



Connection Settings

To do this, enter the name or IP address of the computer on which the DpuServer service is running.

Unless there are no system policies prohibiting this, leave the port at 9091.

Select the connection type with which this DpuServer communicates with its clients.

For a new installation, select WCF for DpuScan 6 and WSE for DpuScan 5.

By the way, it is not necessary that the server is currently available.



Remove server

Cancels the DEM's connection to this DpuServer. This has no effect for connection of the local DpuScan



Update

Updates the view on the right side. for example the used licenses.

**Settings**

Opens the mostly used [option dialog](#) for the currently selected node.

**Copy to clipboard**

Generates a text view of the current table and copies this to the clipboard.

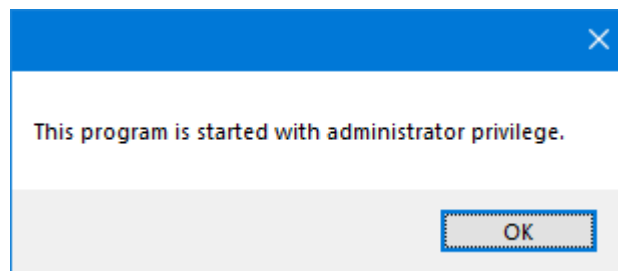
**Hilfe**

Opens the help file.

**Administrator rights**

Signals the program was started with [administrator rights](#).

:



Administrator privilege

This assignment of rights by the operating system should not be confused with the [administration mode](#) of the DpuEnterpriseManager.

See also [menu](#) and [DpuEnterpriseManager](#).

2.3 Local Administration

For the management of the local components there is always the node [local](#) available.

This node has the children:

- [local Status](#)
- [manage migration](#)
- [manage licenses](#)
- [manage rights](#) und
- [manage profiles](#).

If the DpuEnterpriseManager was started in [Administration Mode](#) the nodes for the global variables will be accessible too:

- [Global Variables](#)
- [Global Counters](#)

See also [DpuServer Administration](#) and [Overview](#)

2.3.1 Local Status

The **Local** node displays a list of operating parameters.


To allow fast advice about the operating condition, it is represented via these traffic lights:

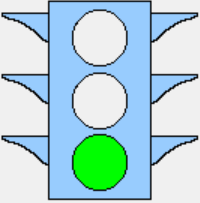
Green The local service runs and can be reached by the scan application.

Yellow The local service starts and reads parameters.

Red The local service does not work. The scan application cannot start.


The parameters shown depend on whether the station is connected to a DpuServer:

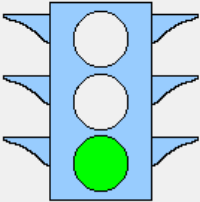
 Local status



| name | status |
|---|--|
| Modul | local server |
| Machine | AKW\WIN7 |
| IP-address | 172.17.0.61 |
| Version | 6.11.4021 |
| Version compatibility | no |
| Special profiles | 1:97_0_D 2:16_0_D |
| Special info | --- |
| Logging active | no |
| Active profile | Prof.: DPS 1.01, Process-ID:2760 : Version=6.11.4091 |
| Adjust on start | yes |
| Case sensitivity | yes |
| Encrypted repository | no |
| Encrypted transmisson | no |
| Timeout feedback client to server / sec | 900 |
| DpuScan.exe:2760 | started |

Stand alone operation mode without a DpuServer

 Local status



| name | status |
|---|---|
| Modul | local server |
| Machine | AKW\WIN7 |
| IP-address | 172.17.0.61 |
| Version | 6.11.4021 |
| Version compatibility | yes |
| Special profiles | 1:97_0_D 2:16_0_D 4:97_0_S10:16_0_S |
| Special info | --- |
| Logging active | no |
| Active profile | Prof.: DPS 1.01, Process-ID:11844 : Version=6.11.4091 |
| Adjust on start | yes |
| Case sensitivity | yes |
| Encrypted repository | no |
| Encrypted transmisson | no |
| Timeout feedback client to server / sec | 900 |
| Storagemode | DpuServer profile database |
| Remote server | AKW\WIN7 |
| Port | 9091 |
| Connection type | TCP |
| IP-address of connected server | 172.17.0.61 |
| Number of unsuccessful attempts server accessi... | 0 |
| Number of successful server accessibility | 11 |
| The last accessibility attempt in | 14.05.2020 06:18:51 |
| The last successful accessibility attempt in | 14.05.2020 06:18:51 |
| accessibility status | reachable |
| DpuScan.exe:11844 | started |

Operation mode connected to a DpuServer

If the program is started in [administration mode](#) and also with [administrator rights](#), the control elements for the DpuLocalServer service are also displayed below the traffic lights.

See also [Status of the DpuServer](#).

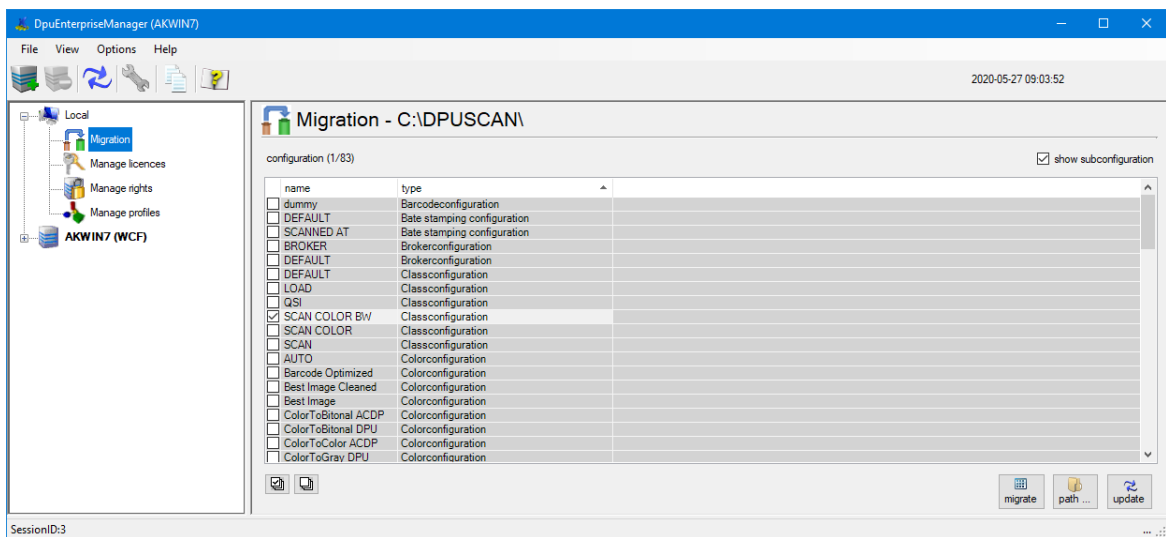
2.3.2 Migration

The **Migration** setting page is used to convert configuration data from older program versions:

- Search for an existing old program version
- Import and adaptation of the old profiles or parts of them.

The migration currently only supports data from program version 4.21. Please note that only profiles and rights are migrated here. Open scan batches must be finalized with the old version, i.e. must be finally completed!

In addition to the title, the setting page also shows the source path for the migration.



Migration from older versions

This page shows on the right side a [table](#) and some [buttons](#).

See also [locale administration](#) for [profiles](#), [licenses](#) and [rights](#).or global [variables](#) and [counters](#).

2.3.2.1 Columns

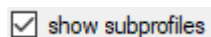
Die Table shows profiles in the old program folder, e.g. the tasks and the classes.

| Column/Symbol | Meaning |
|---------------|---|
| Name | Name of the configuration. |
| Typ | Typ of the configuration, normally shows "Task". If the check box "Show Subconfigurations" is active, the type of the subconfiguration will be shown. |

See also [local administration](#) and [migration](#).

2.3.2.2 Buttons

Above the list this checkbox toggles between showing profiles only and all profiles, including subprofiles.



If the check box is not selected, only the task profiles in the specified path are displayed. Activating the

check box extends the display to all sub-profiles that are used in the task profiles.

Below the list two buttons allow to select or deselect the list entries.

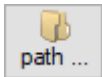


Selects all entries



Removes the check mark from all entries.

Next to that are these buttons:



Determines the path of the old DpuScan application. The configuration files are read and imported from this path.



If at least one line is selected, the button is activated. When you click this button, all selected configurations are taken over into the data stock of the local server.



Updates the list with the profiles / sub-profiles

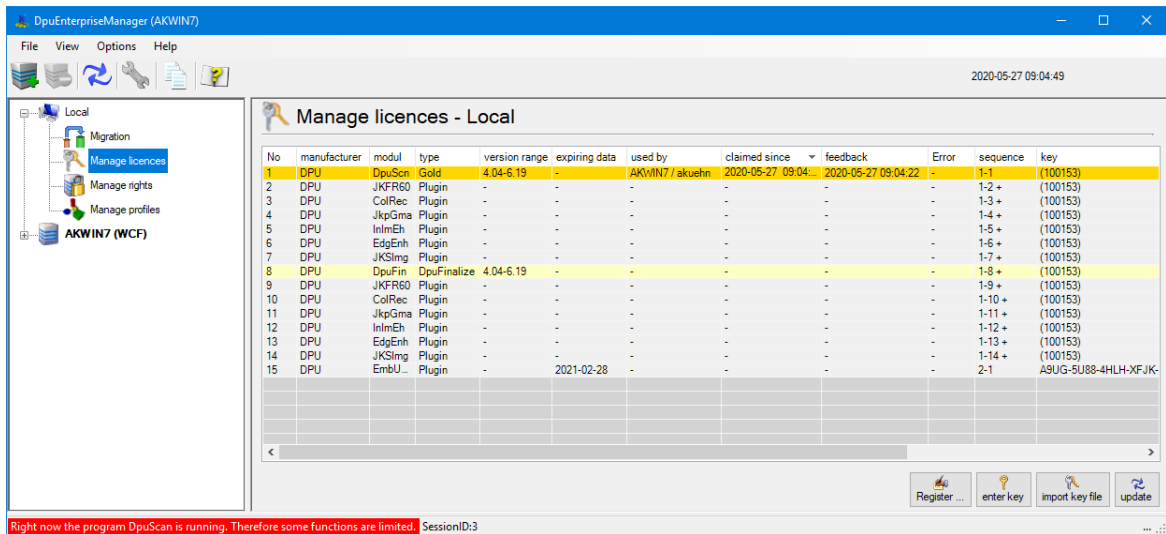
See also [Local Administration](#) and [Migration](#).

2.3.3 License Management

The "License Management" page has the following base functions.

- Display of the actual status in a [table](#)
- Registration
- Import of keys via direct keying
- Import of keys via key import file (.dki file)

Registration and import can be handled by the [keys](#) at the bottom



Local License Management

See also [Server License Management](#) and [locale administration](#) for [migration](#), [profiles](#), and [rights](#) or global [variables](#) and [counters](#).

2.3.3.1 Columns

The list shows, in table form, the licenses and their assignment.

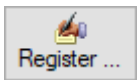
| Column/Symbol | Meaning |
|----------------------|--|
| No. | Ordering number of the entry in the list. It cannot be modified. |
| manufacturer | States the manufacturer key for the license key. |
| modul | States the name of the module. This may be a short name for the server, for the scan program, or also for Plugins. |
| type | States the type of license for the scan program, like Professional or Gold, for example. |
| version range | States for which versions of the program or module the key is valid. |
| expiring date | If the key is limited in time, its expiring date is shown here. |
| used by | Indicates which user is using this license. The information is shown in format <Stationsname>/<username>. |
| division | This column leaves empty on local licensing. |
| claimed since | Time stamp of license query. |

| | |
|-----------------|--|
| feedback | Time stamp of latest reply from the module. |
| error | This column leaves empty on local licensing. |
| sequence | Sequence number of the license for the case that one license key gives allowance for several stations. |
| key | States the dongle or machine number on local licensing. |
| Guid | An arbitrary unique ID for each granted license that is valid for the runtime of the server |

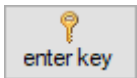
See also [local administration](#) and [licenses](#).

2.3.3.2 Buttons

The local License page has the following control elements:



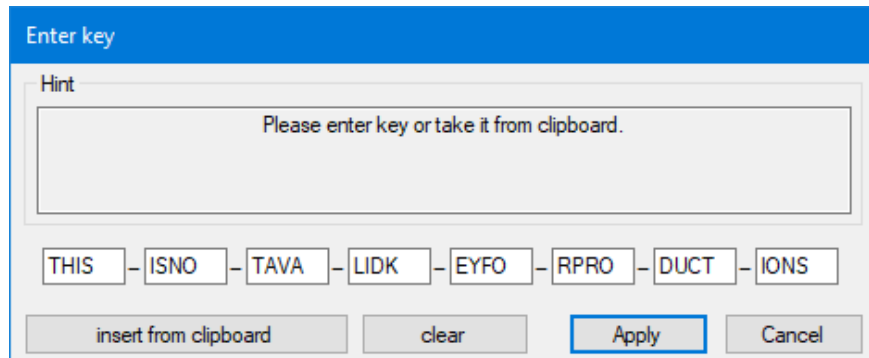
Opens the [dialog](#) for registering the product. A station-specific product key can only be created for registered products; an activation code can only be requested for product keys.



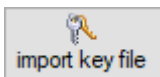
Serves for direct entering of the key of a purchased license.

Should the code string exist electronically, you can use the **insert from clipboard** button, or press Ctrl-V on your keyboard.

By clicking the **Apply** button, the key is sent to and checked by the server. Only valid keys are applied. The user is informed about success or failure of this action

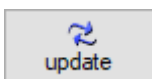


Dialog Enter Keys



Opens the system file-open dialog for files of the type „.dki“.

After opening the code file valid keys will be applied. The user will be informed about success or failure of the action.



Updates the list.

The "Check license" button available in earlier versions has been removed with version 6 of the scanning program. Its tasks are taken over by the update button.

See also [local administration](#) and [licenses](#).

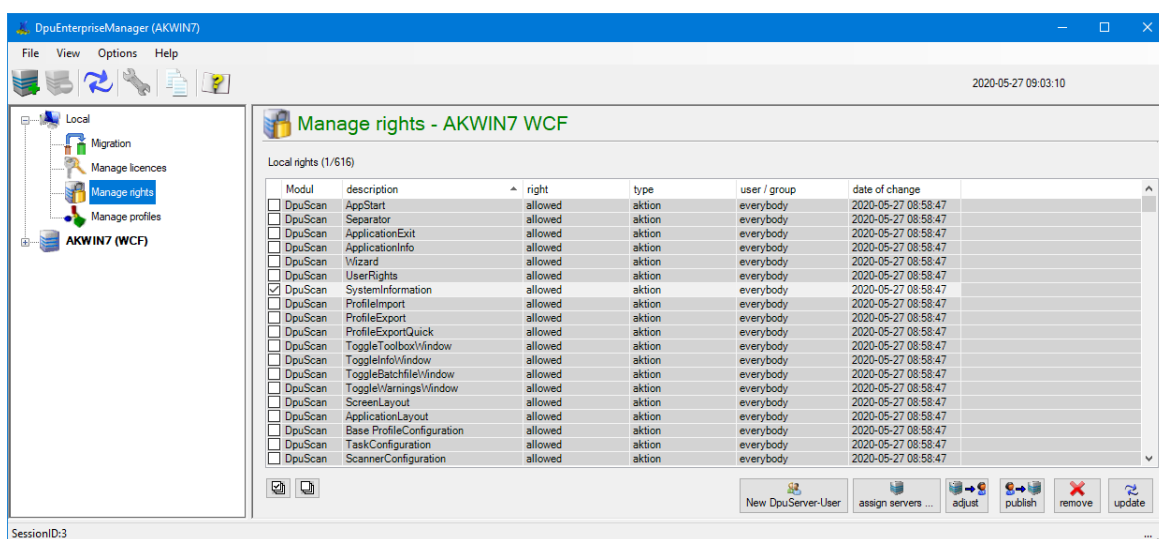
2.3.4 Rights Management

The **User Rights Management** page shows the user rights defined for the scanning program. It does the following:

- Create a new user
- Assign a DpuServer
- Match rights

Please note that the rights are treated **separately** from the profiles. So it is possible that all registered users use the same profiles, but only certain people are allowed to do this.

Please also note that when a station is connected to a **DpuServer**, the rights are always compared with the DpuServer. If no further restrictions are stored there, the original rights scheme is always created again, i.e. everything is allowed. The page shows on the right side a [table](#) and some [buttons](#).



Locla Rights Management

See also [Server Rights Management](#) and [locale administration](#) for [migration](#), [profiles](#), and [licenses](#) or global [variables](#) and [counters](#).

2.3.4.1 Columns

Actually, rights can be assigned only for the scan program and for the JobHandler.

Column/Symbol Meaning

| | |
|--------------------------|---|
| Module | Name of the program or module |
| Description | command or action for which the right shall be assigned |
| Right | the kind of right |
| User/Group | for which this right holds |
| Modification Date | latest time when the rights were modified |

See also [local administration](#) and [rights](#).

2.3.4.2 Buttons

Below the list two buttons allow to select or deselect the list entries.

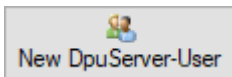


Selects all entries

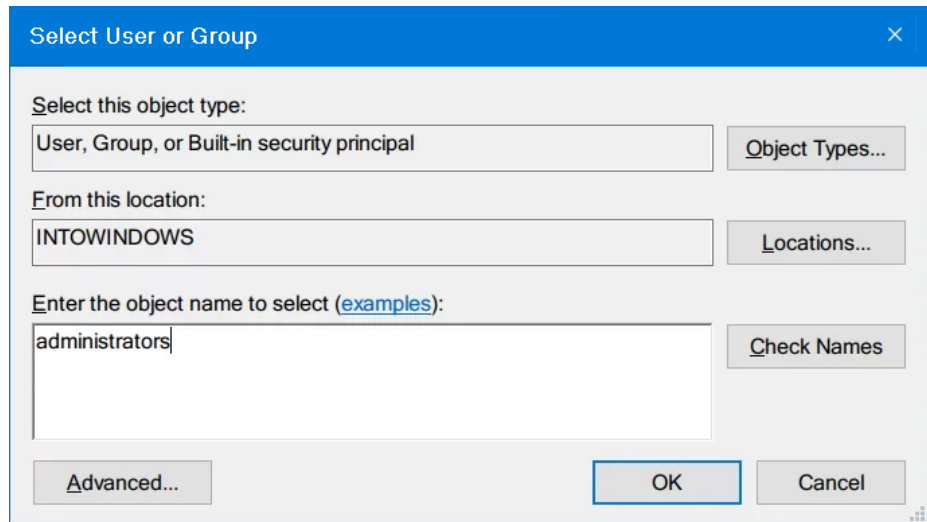


Removes the check mark from all entries.

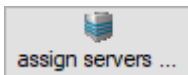
Furthermore there are these buttons:



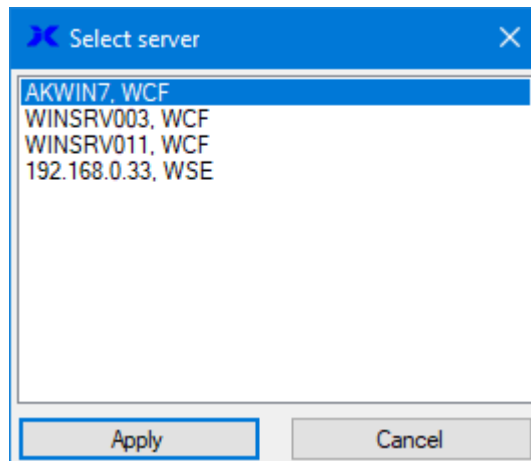
Opens the system dialog for selecting a user who can log on to this computer. A new set of rights is set up for this user. Creating a new user is also possible here, but should also be carried out in the scanning program for security reasons.



System dialog select a user

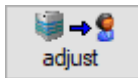


Opens a dialog to select a DpuServer, which should be the target for the rights exported.



Select a DpuServer for Export

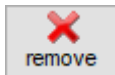
Please note that the DpuServer from which the rights are *obtained* can **not** be set here. This is only possible via the settings in the control panel of the computer.



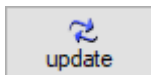
Calls the rights configuration from the server and writes them in the global area of the scan station.



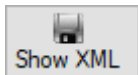
Sends the selected rights from the user area to the server.



Removes the marked rights from the local memory.



Updates the list with the profiles / sub-profiles



Shows the list of rights in XML format. The view is write protected, changes cannot be made. This button is available only if the DpuEnterpriseManager was started in [Administration Mode](#) and also with [Administration Rights](#). For older versions the connection type WSE is necessary too.

See also [local administration](#) and [Rights management](#)

2.3.5 Profile Management

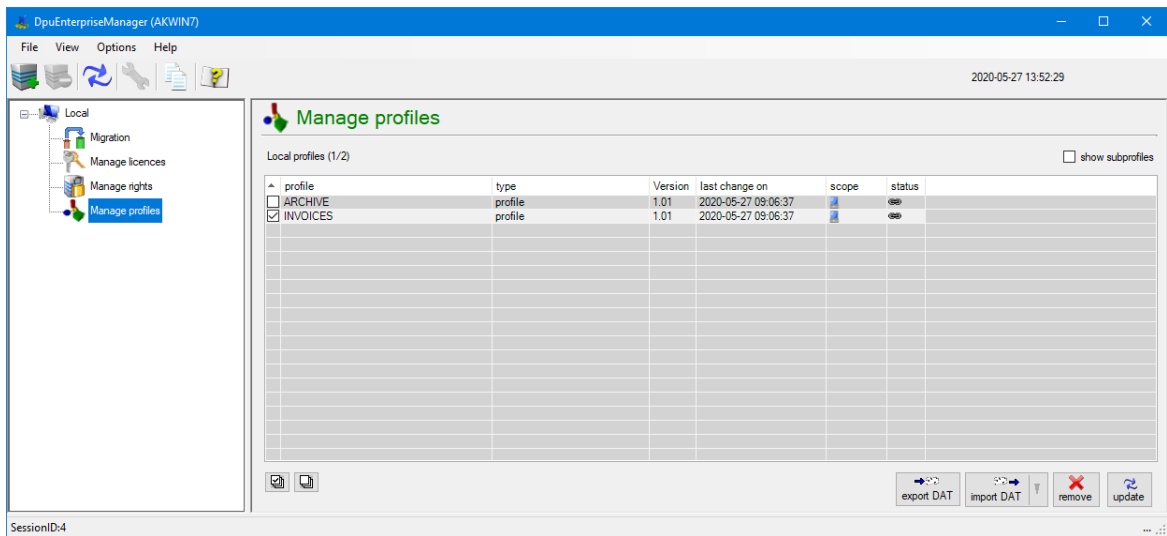
The page **Profile Management** lists the locally used profiles. It serves

- adjust profiles,
- publish selected profiles and
- delete profiles.

The appearance of this page depends on whether the station is connected to a DpuServer or is operated with a dongle and has one or more users:

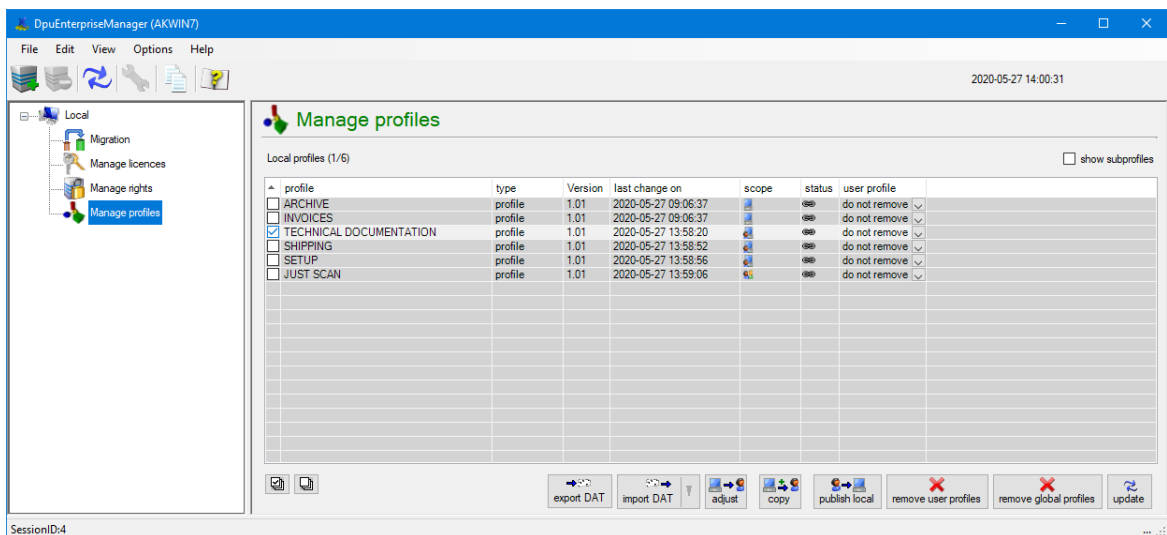
Depending on the operation mode different [table columns](#) and [control elements](#) are shown on the page:

Common profile storage for all users, all users use the same profiles:



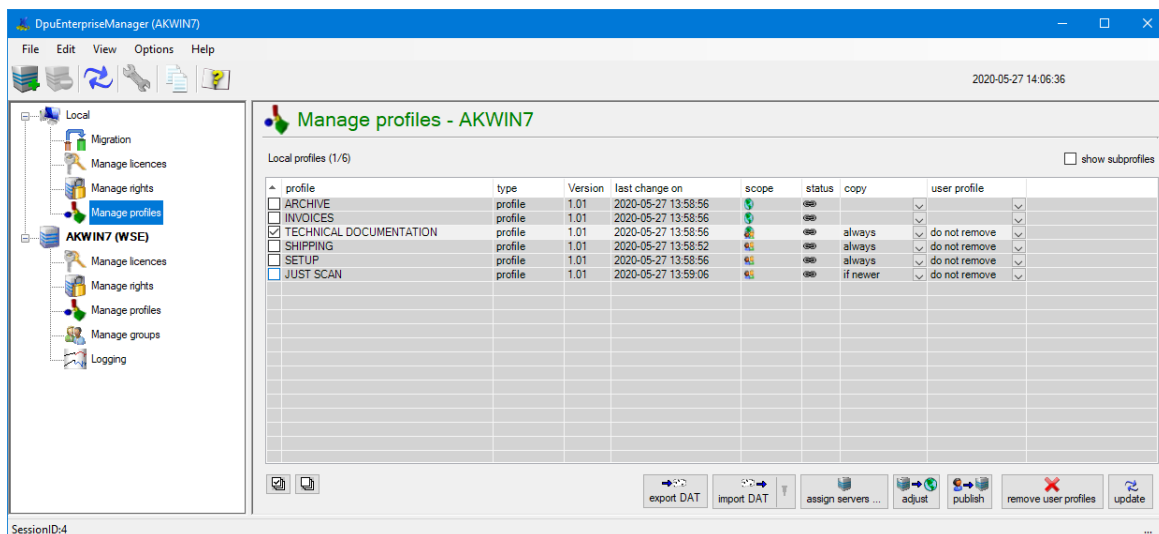
Local Profile Management for Single User

Separate profile storage per user, each user has his own profiles:



Local Profile Management for Multiple Users

DpuServer profile storage, each user has his own profiles which are adjusted with a DpuServer:

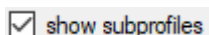


Local Profile Management for DpuServer Storage

See also [Server Profile Management](#) and [locale administration](#) for [migration](#), [licenses](#), and [rights](#) or global [variables](#) and [counters](#).

2.3.5.1 Columns

Above the list this checkbox toggles between showing profiles only and all profiles, including subprofiles.



If the check box is not selected, only the task profiles in the specified path are displayed. Activating the check box extends the display to all sub-profiles that are used in the task profiles.

Column Meaning



The first unnamed Column holds a checkbox to select the corresponding profile or subprofile for deleting or publishing respectively.

Profile This column shows the name of the profile or sub profile. With the type and version this name is unique. Thus the same names can be found for different profile types..

Type Shows the type of the profile

Version Version of the profile. At the moment this is "1.01" always.

last change on Shows the date and time of the last change to this profile. Time can be displayed as local time or global time (UT, formerly GMT)

Scope The presentation depends on the profile storage model.

Common profile storage for all users



Indicates that the profile is stored in the common scope.

Separate profile storage per user



Indicates that the profile is stored in the common scope.



Indicates that the profile is stored in the user's scope.



Indicates that the profile is stored in the common scope well as in the user's scope.

DpuServer profile storage



Indicates that the profile is stored in the common scope.



Indicates that the profile is stored in the user's scope.



Indicates that the profile is stored in the common scope as well as in the user's scope.

Status



Indicates that this subprofile is used in a profile.



Indicates that this subprofile is unused currently.

User profile

This property is of importance only if the program is used by multiple users. For that, the storage modes **Separate profile storage per user** or **DpuServer profile storage** has to be chosen.

It defines how this profile has to be handled in the adjustment process later. For that the profile must be published previously.

This property is valid for profiles only. Subprofiles acts as the profiles they belong to.

The property is available for changed profiles, it has no effect for unchanged profiles, so the dropdown list disappears after a publishing procedure.

remove After the adjustment process the profiles in the user's scope with the same name and type will be deleted. So changes made user (accidentally) by the user will be re-done.

don't remove Keeps profiles with same names in the user's scope . So changes made user (intentionally) by the user will be kept.

Below the list two buttons allow to select or deselect the list entries.



Selects all entries



Removes the check mark from all entries.

See also [local administration](#) and [profiles](#).

2.3.5.2 Buttons

Below the list two buttons allow to select or deselect the list entries.

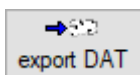


Selects all entries

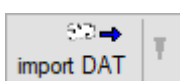


Removes the check mark from all entries.

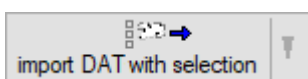
Furthermore there are these buttons:



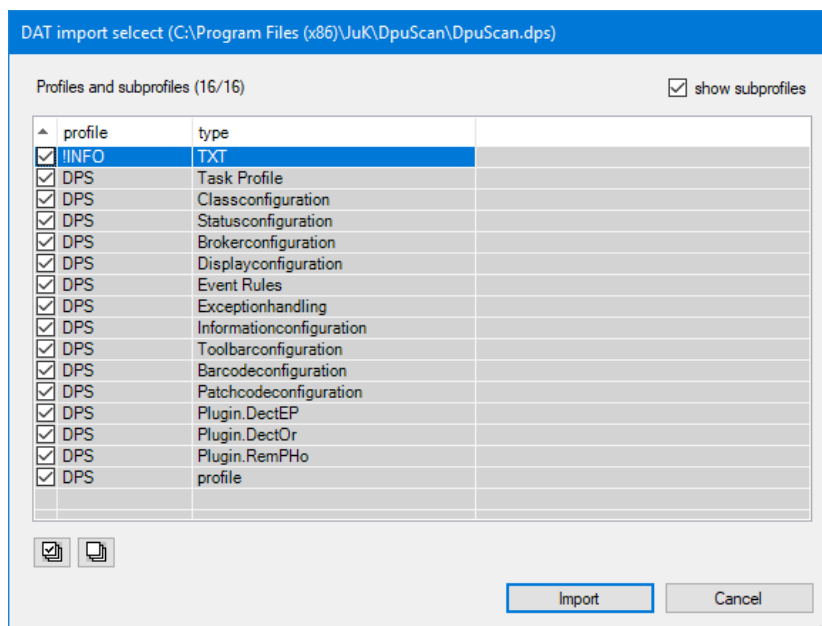
Creates an export file which contains the selected profiles. Before the export starts a dialog is shown to select a folder and the file name.



Opens a standard dialog for reading a configuration file.



With the "with selection" option, reading can be reduced to certain sub-profiles:



Import a DAT with selection

The button keeps the last selected mode.



This button is only available if the local service is configured **without** any DpuServer connection.

Copies the marked profiles to the lokal memory area, regardless of the settings in the column "user profile"



Calls profiles or sub-profiles from the server and writes then in the global area of the scan computer. Here, the rules for [Group Management](#) are obeyed for spreading them.

Even if the local service is configured to work without any DpuServer the settings in the column "user profiles" will be used.



*This button is only available if the local service is configured **to connect a DpuServer**.*

Sends the selected profiles with the attributes from columns copy and user profile from the user area to the server.

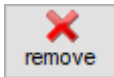
You can publish only profiles or sub-profiles from the user area to the server.

For sub-profiles, the cells of the columns **copy** and **user profile** are inactive.



*This button is only available if the local service is configured **without any DpuServer connection**.*

Local configurations are stored in the context of that user who created the settings. Other users will not be able to use those profiles. To enable all users of the workstation to use the configuration it has to be published.



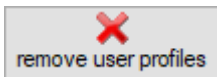
*This button is only available if the local service is configured **to connect a DpuServer**.*

Removes the marked profile from the local memory area of the scan station.

If the profile is stored only in the local memory area, the entry will be removed.

If the profile is additionally stored in the global area, the entry will remain there, but will be marked with another symbol.

If the profile is stored only in the global area, it cannot be removed by this action. Removal of profiles in the global area is defined by the distribution rules of the [Group Management](#) . There, Remove is foreseen, and it will be executed with the next adjustment.

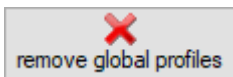


*This button is only available if the local service is configured **without any DpuServer connection**.*

Removes the marked profile from the local memory area of the scan station.

If the profile is stored only in the local memory area, the entry will be removed.

If the profile is additionally stored in the global area, the entry will remain there, but will be marked with another symbol.



*This button is only available if the local service is configured **without any DpuServer connection**.*

Removes the marked profile from the global memory area of the scan station.

If the profile is stored only in the global memory area, the entry will be removed.

If the profile is additionally stored in the local area, the entry will remain there, but will be marked with another symbol.



Updates the list with profiles/sub-profiles.

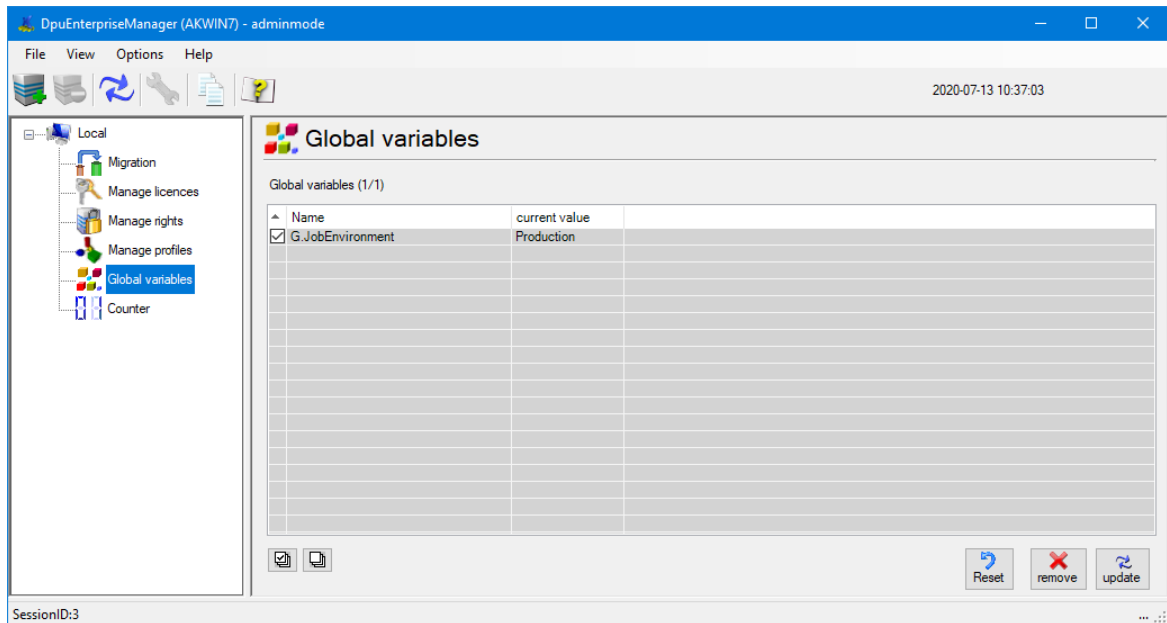
See also [local administration](#) and [profiles](#).

2.3.6 Global Variables

This node is only visible in [administration mode](#). The property page is used to display, reset and remove global strings.

Global strings can only be created, set and evaluated **in DpuScan**. They serve to keep certain values the same for all operators, e.g. the distinction between a test and production environment.

The page shows a [table](#) and below it some [buttons](#).



Globale Text-Variablen

See also [Global Variables](#), [global variables on the DpuServer](#) and [locale administration](#) for [migration](#), [profiles](#), [licenses](#), and [rights](#)

2.3.6.1 Columns

The table for the global variables shows these columns:

| Column/Symbol | Meaning |
|---------------|---|
| Name | Name of the variables in the program. Please use the usual decorated spelling there, e.g. % (G.MyVariable). |
| Value | Shows the current content of the variable. |

See also [variables management](#), [variables management on the DpuServer](#) and [locale administration](#),

2.3.6.2 Buttons

Below the list two buttons allow to select or deselect the list entries.



Selects all entries



Removes the check mark from all entries.

Next to the check boxes are these buttons:



Reset

Assigns an empty character string to the variable.



remove

Removes the variable from the list



update

Updates the list.

See also [variables management](#), [variables management on the DpuServer](#) and [locale administration](#),

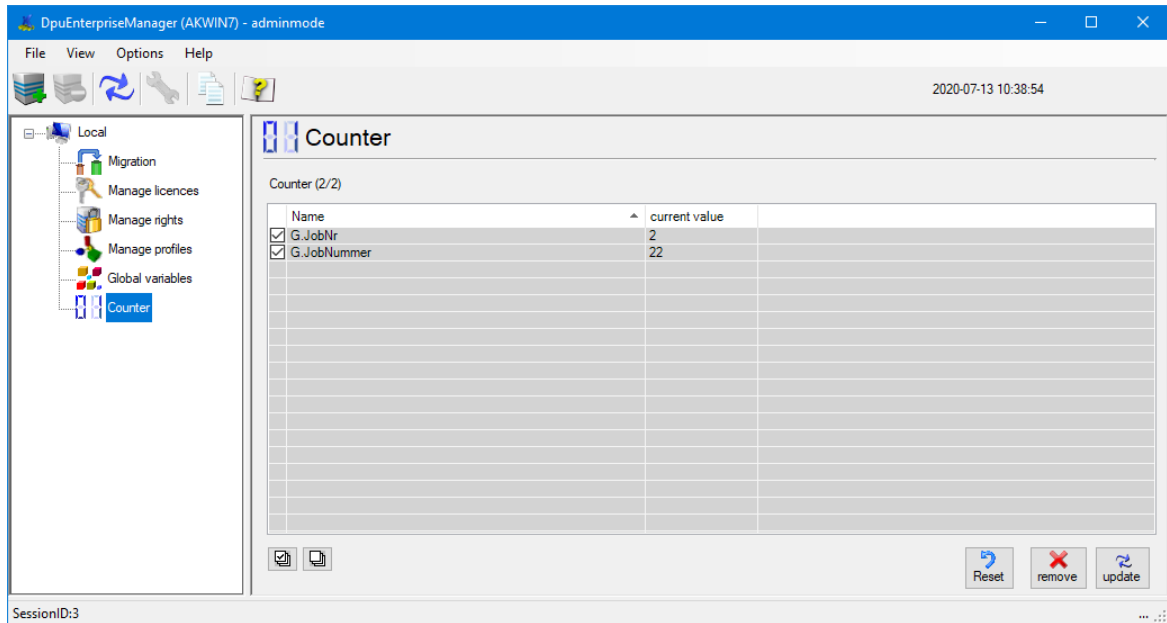
2.3.7 Global Counters

This node is only visible in [administration mode](#). The property page is used to display, reset and remove global counters.

Global counters can be created and evaluated **only in DpuScan**. They are used to keep certain counters the same for all operators, e.g. the batch number unique for all users on one station.

After querying the counter from the program, the counter is automatically increased by one.

The page shows a [table](#) and below it some [buttons](#):



Globale Text-Variablen

See also [Global Variables](#), [Global counters on the DpuServer](#) and [locale administration](#) for [migration](#), [profiles](#), [licenses](#), and [rights](#)

2.3.7.1 Columns

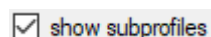
The table for the global variables shows these columns:

| Column/Symbol | Meaning |
|---------------|--|
| Name | Name of the variables in the program. Please use the usual decorated spelling there, e.g. % (G.MyCounter). |
| Value | Shows the current content of the variable. |

See also [counters management](#), [counters management on the DpuServer](#) and [locale administration](#).

2.3.7.2 Schaltflächen

Above the list this checkbox toggles between showing profiles only and all profiles, including subprofiles.



If the check box is not selected, only the task profiles in the specified path are displayed. Activating the check box extends the display to all sub-profiles that are used in the task profiles.

Below the list two buttons allow to select or deselect the list entries.



Selects all entries

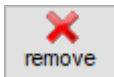


Removes the check mark from all entries.

Next to the selection controls are these buttons:



Assigns the counter the value zero.



Removes the counter from the list.



Updates the list.

See also [counters management](#), [counters management on the DpuServer](#) and [locale administration](#).

2.4 Manage Remote Servers

The DpuEnterpriseManager can manage one or more servers. Such servers must initially be registered for their management. Further to menu entries, you can also use the [elements from the toolbar](#).

In the tree view a registered DpuServer will be displayed with these subnodes:

- [License Management](#)
- [Rights Management](#)
- [Group Management](#)
- [Profile Management](#) and
- [Logging](#).

In administration mode the following are displayed also:

- [Global Variablee](#)
- [Global Counters](#)

See also [Local Administration](#) and [Overview](#).

2.4.1 Server Status

Each server node displays a list of operating parameters. Further servers can be added with the corresponding item in the [menu](#) or the corresponding button in the [button bar](#).

The traffic lights inform about the actual operating status.

Green

Server runs and is accessible.

This status gives *no* advice about any licensing.

Yellow

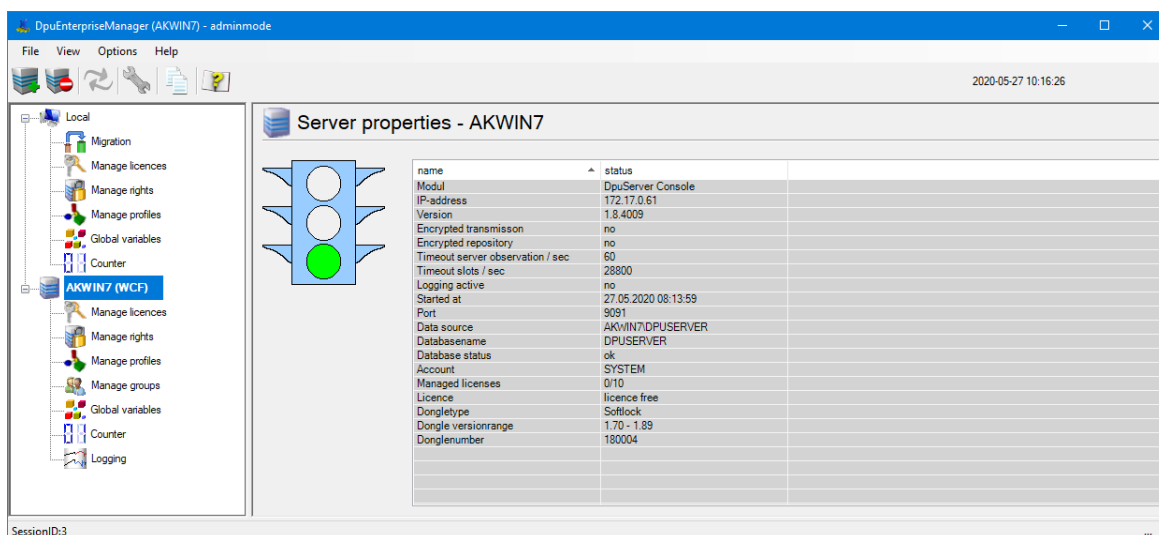
Server starts and reads parameters.

Red

Server does not work, or is not accessible.

The service can only be controlled if the program is started with [administrator rights](#) and in [administration mode](#).

The name of the selected server is displayed above a list of properties:



| name | status |
|----------------------------------|---------------------|
| Modul | DpuServer Console |
| IP-address | 172.17.0.61 |
| Version | 1.8.4009 |
| Encrypted transmission | no |
| Encrypted repository | no |
| Timeout server observation / sec | 60 |
| Timeout slots / sec | 28800 |
| Logging active | no |
| Started at | 27.05.2020 08:13:59 |
| Port | 5091 |
| Data source | AKWIN7/DPUSERVER |
| Databasename | DPUSERVER |
| Database status | ok |
| Account | SYSTEM |
| Managed licenses | 0/10 |
| License | licence free |
| Dongletype | Softlock |
| Dongle versionrange | 1.70 - 1.89 |
| Donglenumber | 180004 |

Properties of a DpuServer

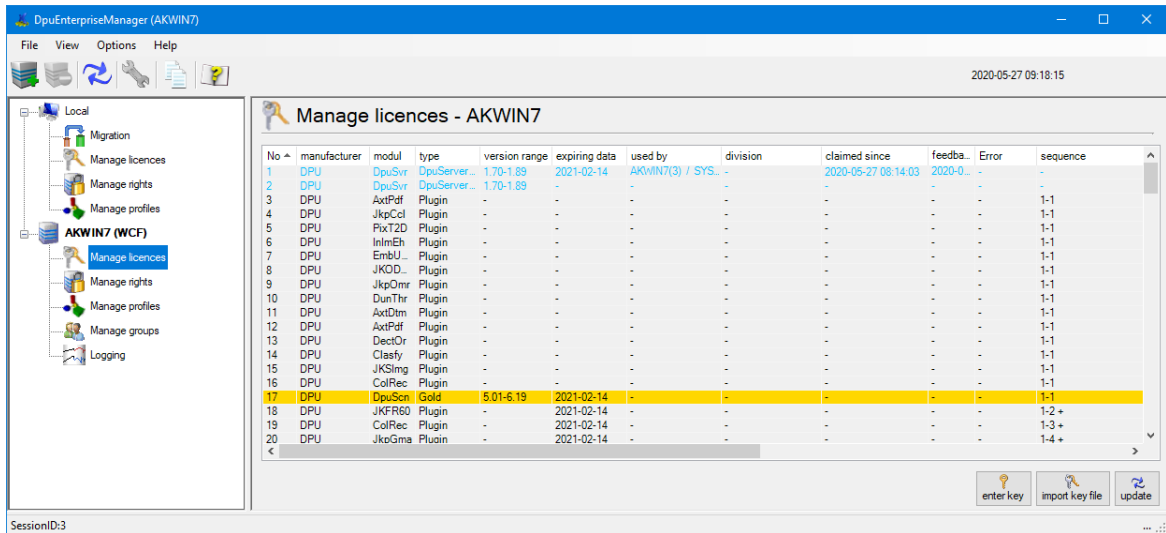
See also [status of the DpuLocalServer](#), [DpuServer Management](#), [Licenses](#), [Rights](#), [Profiles](#), [Groups](#) and [Logging](#). Furthermore, for [Administration Mode](#) see [Variables](#) and [Counters](#).

2.4.2 License Management

The "License Management" page has the following base functions.

- Display of the actual status
- Import of keys via direct keying
- Import of keys via key import file (.dki file)

DpuEnterpriseManager shows the status of the managed licenses of the selected server.



Lizenzen auf einem DpuServer

Beneath the [table](#) are some [buttons](#) for the management of the licenses.

See [Local Licenses](#), [DpuServer Management](#), [Server Status](#), [Rights](#), [Profiles](#), [Groups](#) and [Logging](#). Furthermore, for [Administration Mode](#) see [Variables](#) and [Counters](#).

2.4.2.1 Columns

The list shows, in table form, the licenses and their assignment.

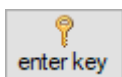
| Column/Symbol | Meaning |
|----------------------|--|
| No. | Ordering number of the entry in the list. It cannot be modified. |
| manufacturer | States the manufacturer key for the license key. |
| modul | States the name of the module. This may be a short name for the server, for the scan program, or also for Plugins. |
| type | States the type of license for the scan program, like Professional or Gold, for example. |
| version range | States for which versions of the program or module the key is valid. |
| expiring date | If the key is limited in time, its expiring date is shown here. |
| used by | Indicates which user is using this license. The information is shown in format <Stationsname>/<username>. |

| | |
|----------------------|---|
| division | Text attribute for an easier identification of the computer names. Division names can be created and assigned on the page Manage groups . |
| claimed since | Time stamp of license query. |
| feedback | Time stamp of latest reply from the module. |
| error | Displays an error, for example if a client does not give the expected feedback in time. |
| sequence | Sequence number of the license for the case that one license key gives allowance for several stations. |
| key | States the dongle or machine number on local licensing. |
| Guid | An arbitrary unique ID for each granted license that is valid for the runtime of the server |

See also [server management](#), [license management](#) und [license management at the local station](#).

2.4.2.2 Buttons

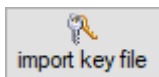
In addition to viewing the actual license situation, you can import keys. This can be done in two ways:



Serves for direct entering of the key of a purchased license.

Should the code string exist electronically, you can use the **insert from clipboard** button, or press Ctrl-V on your keyboard.

By clicking the **Apply** button, the key is sent to and checked by the server. Only valid keys are applied. The user is informed about success or failure of this action.



Here you reach the standard file dialog for the file extension „.dki“.

You can select and open the code file. Valid keys can be applied. The user will be informed about success or failure of the action.



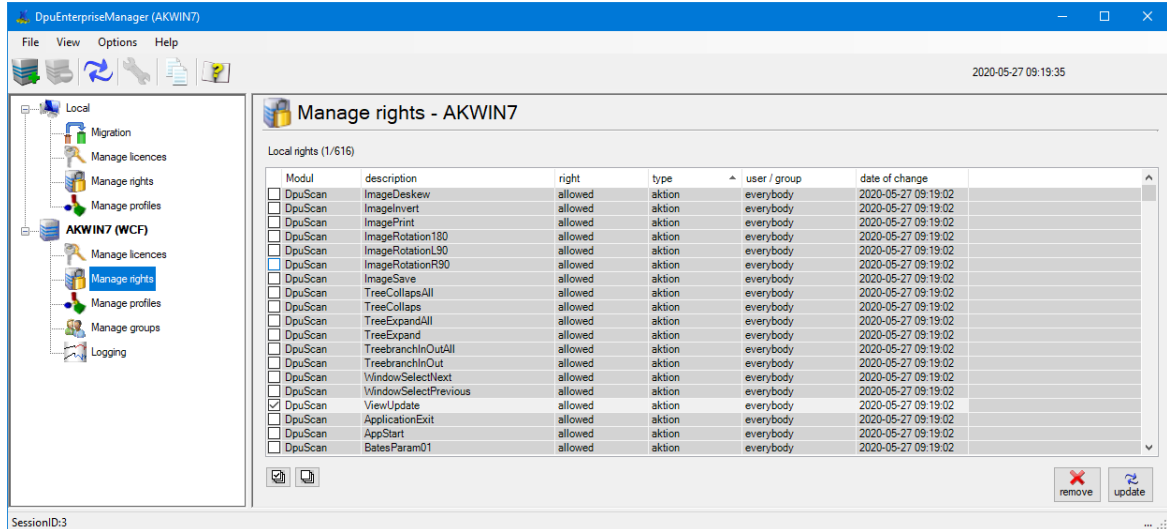
Updates the list..

Warning: Only as many licenses can be registered as the DpuServer can manage at the same time. These are 5 licenses on delivery, additional packages for 20, 50 or 100 additional licenses can be purchased.

See also [server management](#), [license management](#) und [license management at the local station](#).

2.4.3 Rights Management

On the page **Manage rights - <servername>** , the rights that are saved in the server, and such rights can also be removed.



Rights mannagement on a DpuServer

For that the page lists the rights in a [table](#). There are some [buttons](#) for managemnet of the rights..

See also [Local Rights](#), [DpuServer Management](#), [Server Status](#), [Licenses](#), [Profiles](#), [Groups](#) and [Logging](#). Furthermore, for [Administration Mode](#) see [Variables](#) and [Counters](#).

2.4.3.1 Columns

This table shows the rights for the actions and profiles on the DpuServer. Changes can only be made via the scan application. Creating a new user is also possible here, but should also be carried out in the scanning program for security reasons.

Column/Symbol Meaning

- Module** Name of the program or module
- Description** command or action for which the right shall be assigned
- Right** the kind of right
- User/Group** for which this right holds
- Modification Date** latest time when the rights were modified

See also [server management](#), [rights management](#) and [rights management at the local station](#).

2.4.3.2 Buttons

Below the list two buttons allow to select or deselect the list entries.



Selects all entries

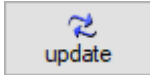


Removes the check mark from all entries.

The further buttons are:



Removes selected right settings from the server.



Shows changes that were executed by other stations during the runtime of the configuration

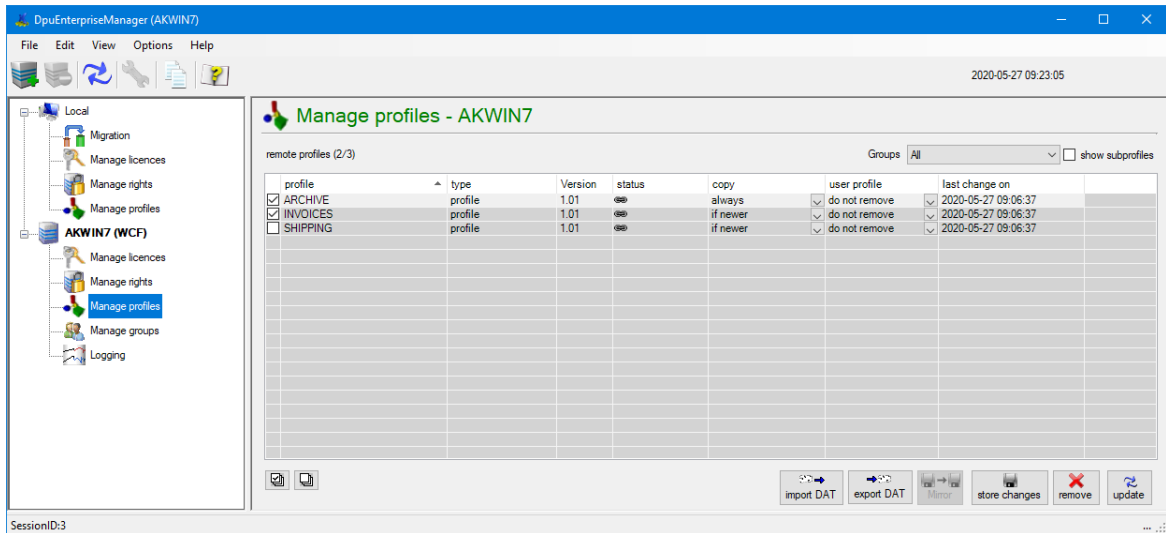
See also [server management](#), [rights management](#) and [rights management at the local station](#).

2.4.4 Profile Management

The **Manage profiles** page lists the profiles on the DpuServer. It serves

- Save and read in profiles,
- Change attributes when comparing
- Delete profiles.

It shows a [table](#) and some [buttons](#) to manage the rights on the DpuServer.

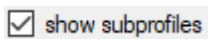


Profile management on a DpuServer

See also [Local Profiles](#), [DpuServer Management](#), [Server Status](#), [Licenses](#), [Rights](#), [Groups](#) and [Logging](#). Furthermore, for [Administration Mode](#) see [Variables](#) and [Counters](#).

2.4.4.1 Columns

Above the list this checkbox toggles between showing profiles only and all profiles, including subprofiles.



If the check box is not selected, only the task profiles in the specified path are displayed. Activating the check box extends the display to all sub-profiles that are used in the task profiles.

Column Meaning



The first unnamed Column holds a checkbox to select the corresponding profile or subprofile for deleting or publishing respectively.

Profile This column shows the name of the profile or sub profile. With the type and version this name is unique. Thus the same names can be found for different profile types..

Type Shows the type of the profile

Version Version of the profile. At the moment this is "1.01" always.

Status



Indicates that this subprofile is used in a profile.



Indicates that this subprofile is unused currently.

- Copy** This property is valid only on **DpuServer profile storage**.
It defines how this profile has to be handled in the adjustment process later. For that the profile must be published previously.
This property is valid for profiles only. Subprofiles acts as the profiles they belong to.
- newer** Indicates that when matching a profile is only copied from DpuServer to the common scope, if it is newer than the existing profile there. Watch out, a newer copy doesn't change the precedence in the use of profiles.
- always** Indicates that a profile is copied always from the DpuServer to the common scope.
- User profile** This property is of importance only if the program is used by multiple users. For that, the storage modes **Separate profile storage per user** or **DpuServer profile storage** has to be chosen.
It defines how this profile has to be handled in the adjustment process later. For that the profile must be published previously.
This property is valid for profiles only. Subprofiles acts as the profiles they belong to.
The property is available for changed profiles, it has no effect for unchanged profiles, so the dropdown list disappears after a publishing procedure.
- remove** After the adjustment process the profiles in the user's scope with the same name and type will be deleted. So changes made user (accidentally) by the user will be re-done.
- don't remove** Keeps profiles with same names in the user's scope . So changes made user (intentionally) by the user will be kept.
- last change on** Shows the date and time of the last change to this profile. Time can be displayed as local time or global time (UT, formerly GMT)

Below the list two buttons allow to select or deselect the list entries.



Selects all entries



Removes the check mark from all entries.

2.4.4.2 Buttons

Below the list two buttons allow to select or deselect the list entries.



Selects all entries



Removes the check mark from all entries.

- store changes** Stores the changes that were made in the drop-down list fields.
- remove** Removes all selected profiles from the server. Any linkages of groups to profiles that were eventually made in the Group Management are made void.
- Update** Updates the view of the list.

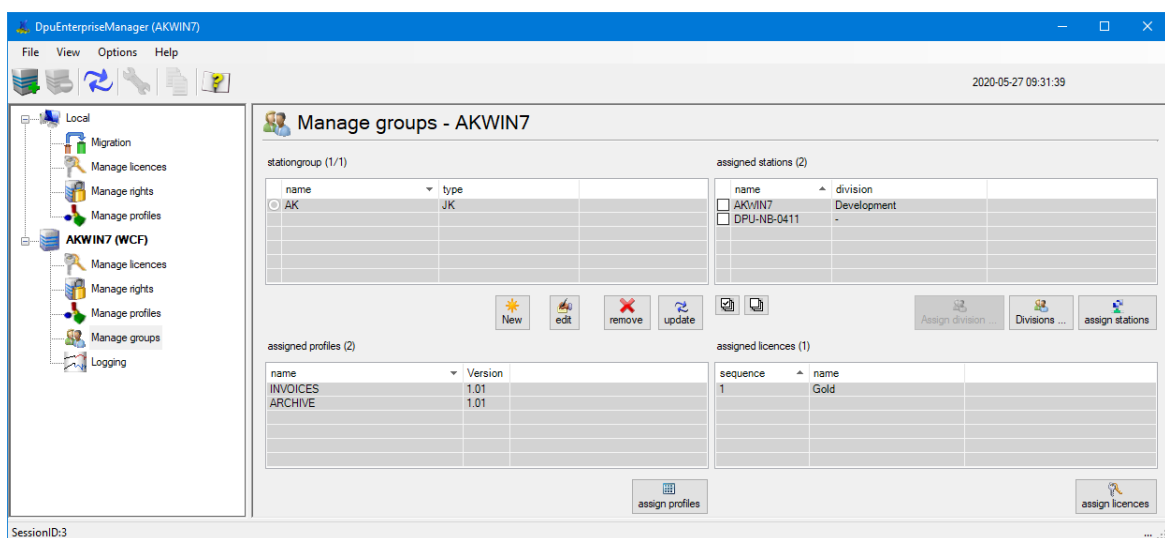
The selection options of the **copy** and **user profile** columns, in connection with the **store changes** button, allow to change the attributes for adjustment still later on the server.

2.4.5 Group Management

The **Manage groups** page manages the distribution rules for profiles and licenses. It is divided into four segments:

- [Groups](#)
- [Stations](#)
- [Profiles](#) and
- [Licenses](#)

Station groups are instances that must be generated in order to assign stations, or profiles, or licenses to them. A profile is moved to a station only if the station is within a station group to that profiles are assigned.



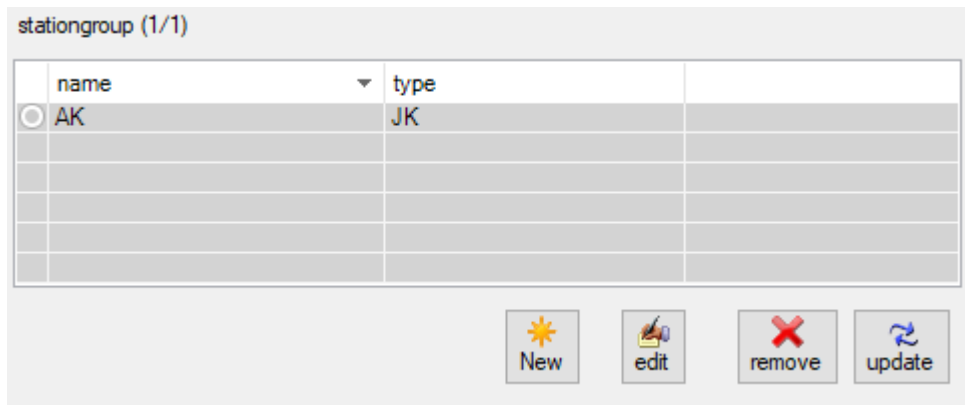
Group management on a DpuServer

Group management is therefore the central component of [DpuServer management](#)

See also [DpuServer Management](#), [Server Status](#), [Licenses](#), [Rights](#), [Profiles](#) and [Logging](#). Furthermore, for [Administration Mode](#) see [Variables](#) and [Counters](#).

2.4.5.1 Groups

The Groups area enables station groups to be created. A station group is the basis for the settings. Only one group can be edited at a time.



Groups on a DpuServer

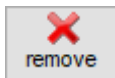
The list shows the names of the groups used. A distinction is made between groups that are only known to the DpuServer and groups that are simultaneously stored in a directory service "LDAP", e.g. the "Active Directory" service from Microsoft.



This button opens the [dialog box](#) to enter a new station group.



Opens the dialog again for editing the group currently selected.



Removes the group from the list. Stations are not removed. Of course, the LDAP group is not removed from the domain either.

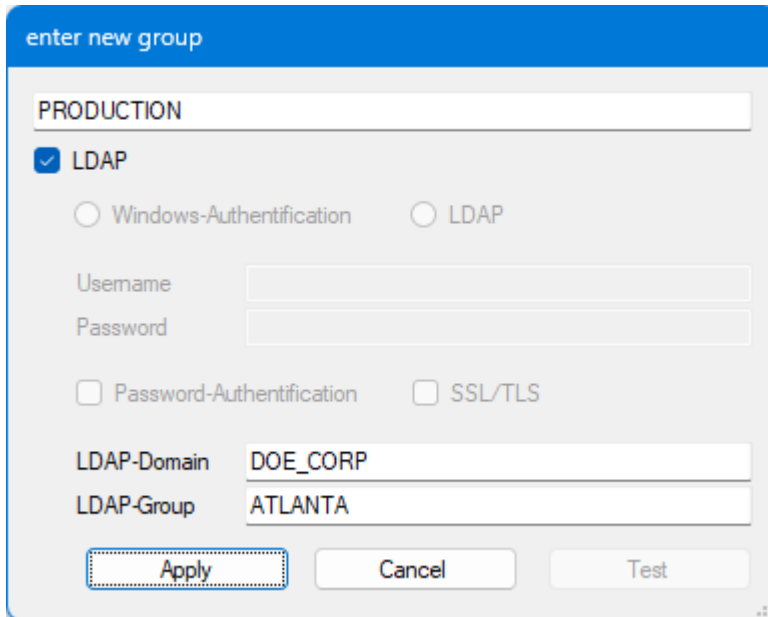


Updates the list.

See also [Group management](#), [Stations](#), [Profiles](#) and [Licenses](#).

2.4.5.1.1 Add a group

In this dialog a new station group can be added.



Add a Station Group

The name can be freely assigned. A group name may only exist once. If you try to create an existing name again, a message indicates that this name already exists. Then no new entry is created.

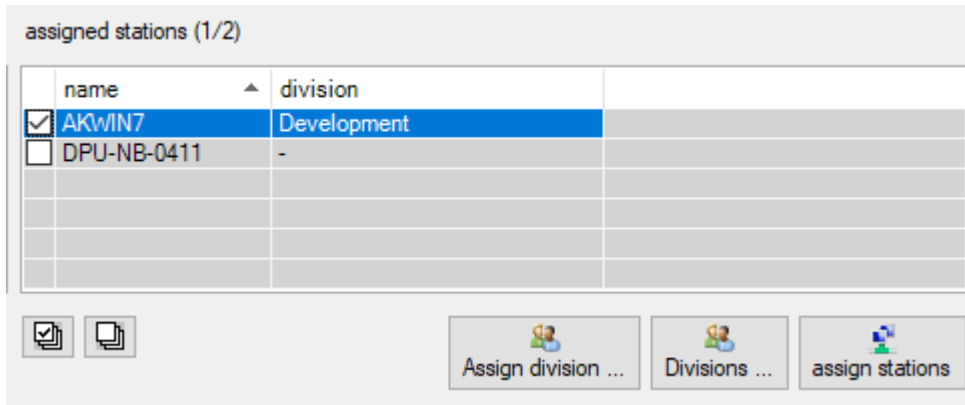
An "**Active Directory**" group can also be specified in Microsoft networks. To do this, activate LDAP and enter the group and domain, choose the authentication method and the common parameters.

In the case of an LDAP group, the associated stations are specified by the Active Directory. It is therefore not possible to add or exclude other stations here in the DpuEnterpriseManager.

See also [Station Groups](#) and [Group Management](#).

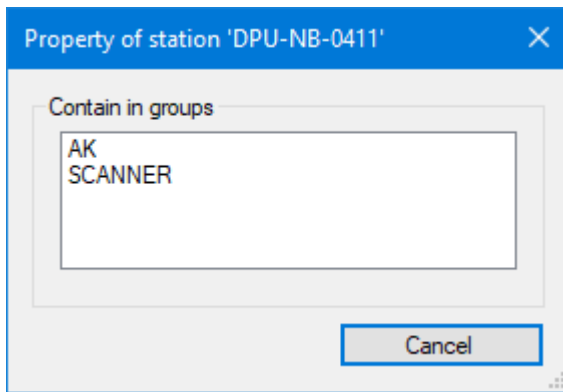
2.4.5.2 Stations

The "Stations" area shows the assignment of stations to station groups and the administration of departments. It first shows the list of stations that are currently assigned to the selected group.



Stations in a Station Group

A double click on a line shows all groups the selected station belongs to.



Eigenschaften einer Station

When a group is created, it initially contains only an asterisk (*) as the only entry. This means that all stations that are connected to this DpuServer belong to this group. To prevent all stations from always having all licenses available, it makes sense to assign the stations to different groups. If you want to restrict the group, you have to remove this asterisk and enter individual computer names.

When specifying the stations, **placeholders** can be used in station names, a question mark (?) stands for a single letter, an asterisk (*) for more. Stations can also be members of several groups. To keep an overview, however, this **not recommended**.

Department names can be assigned to stations, making it easier to distinguish between many stations with similar names.

There are several controls to perform these tasks:

Below the list two buttons allow to select or deselect the list entries.

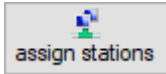


Selects all entries

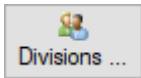


Removes the check mark from all entries.

Next to them are these buttons from right to left:



This button opens the [dialog](#) for adding stations from a list:

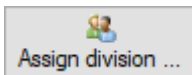


Opens a dialog to manage the division names:

 A dialog box titled "Administrare divisions". It has two text input fields: "Name" with the value "Test" and "Description" with the value "Standard test environment". Below these is a list box containing: "Controlling (Controllers internal)", "Development (Programmers)", "Production (Scanner stuff)", and "Test (Standard test environment)". The "Test" entry is selected. At the bottom are buttons for "Add", "Edit", "Remove", "Apply", and "Cancel".

Abteilungen verwalten

Any department names can be specified here. You can then sort by these departments in the [license management](#) license management.



Opens the list of departments so that the selected stations can be assigned to the selected department.

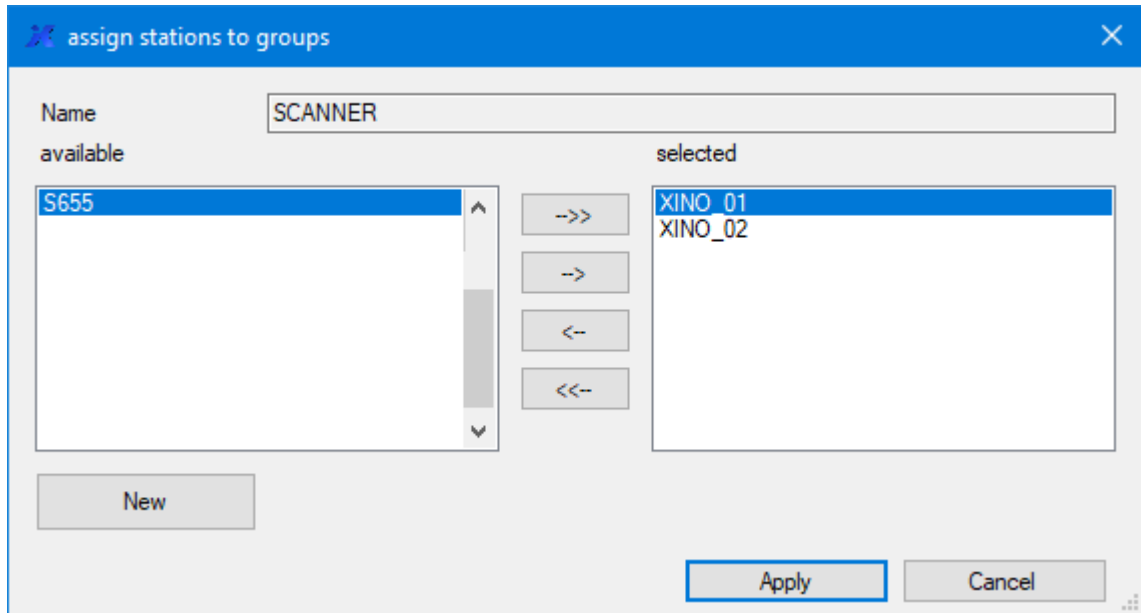
 A dialog box titled "Assign division to stations". It features a dropdown menu labeled "Assign division" with "Development" selected. Below the dropdown are "Apply" and "Cancel" buttons.

Zuordnen von Abteilungen

See also [Group management](#), [Groups](#), [Profiles](#) and [Licenses](#).

2.4.5.2.1 Assign Stations

In this dialog you can add and remove stations to a station group.



Assign Stations to a Station Group

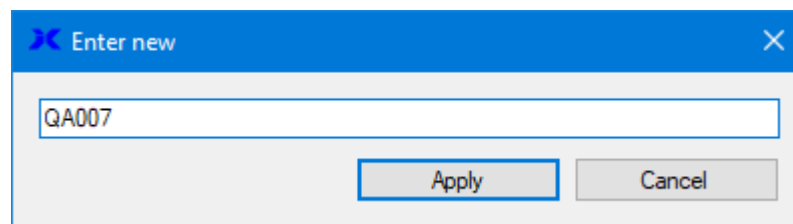
The name of the station group is given in the upper field. Below this is the column on the left of the **available stations** and on the right the names of the **selected stations** that already belong to this group. In the case of a newly created group, an asterisk (*) stands for representative for all accessible computers in the same network.



The buttons between the lists are used to add or remove one or all station names.



If a station is not listed on the left, it can be added to the list with the **New** button:



It is not necessary that the station can be reached at this time.

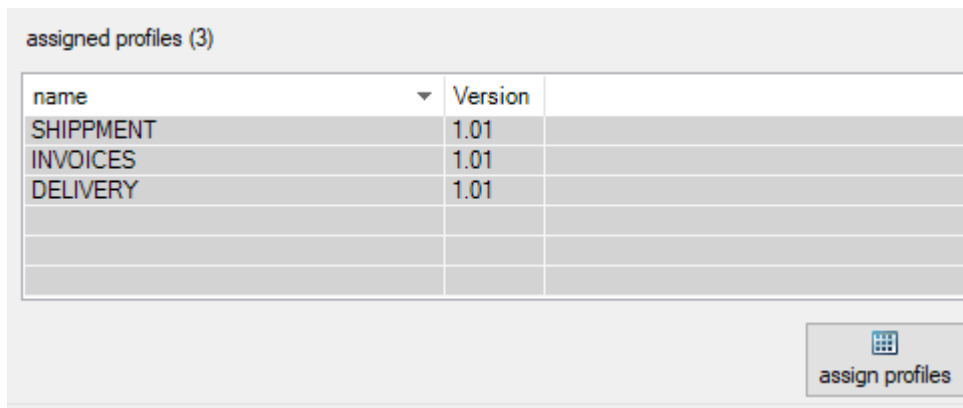
Station names may not be assigned twice in a group.

Stations can be members of several groups. You will then receive all of the specified licenses and profiles.

See also [Stations](#), [Group management](#), [Groups](#), [Profiles](#) and [Licenses](#).

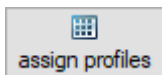
2.4.5.3 Profiles

One or more profiles can be assigned to a station group. This means that all stations belonging to the selected group are supplied with these profiles during the adjustment process at program start..



Assign Profiles to a Station Group

This part of the dialog shows the list of assigned profiles and the button for the configuration:

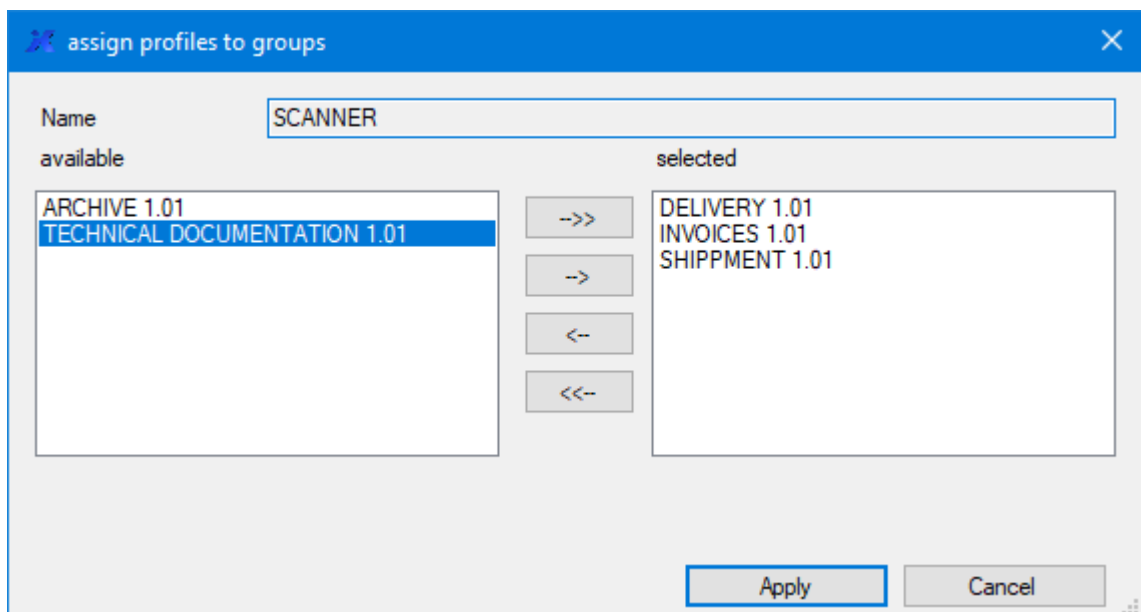


This button opens the corresponding [dialog](#) to add profiles

See also [Group management](#), [Groups](#), [Stations](#) and [Licenses](#).

2.4.5.3.1 Assign Profiles

In this dialog you can add and remove profiles to a station group.



Add Profiles to a Station Group

The name of the station group is displayed in the upper field. There are two columns below that. On the left side are the available profiles and on the right side the already selected ones.



The buttons between the lists are used to add or remove one or all profiles.

One can only add profiles that are [on the DpuServer](#), i.e. that have been published there. When you remove profiles, they are only removed from this list, but they remain on the DpuServer.

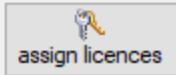
See also [Profiles](#) and [Group management](#).

2.4.5.4 Licenses

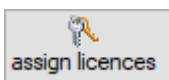
Licenses can be assigned to the station group. A station that connects to the DpuServer tries to get a license type from the top of the list. This will work as long there are vacant licenses of this type. If all licenses are occupied by others the new station will get a license of the next type in the list and so on.

assigned licences (3)

| sequence | name |
|----------|-------|
| 1 | Gold |
| 2 | GL 10 |
| 3 | QSI |
| | |
| | |
| | |



Lizenzen einer Stationsgruppe zuordnen



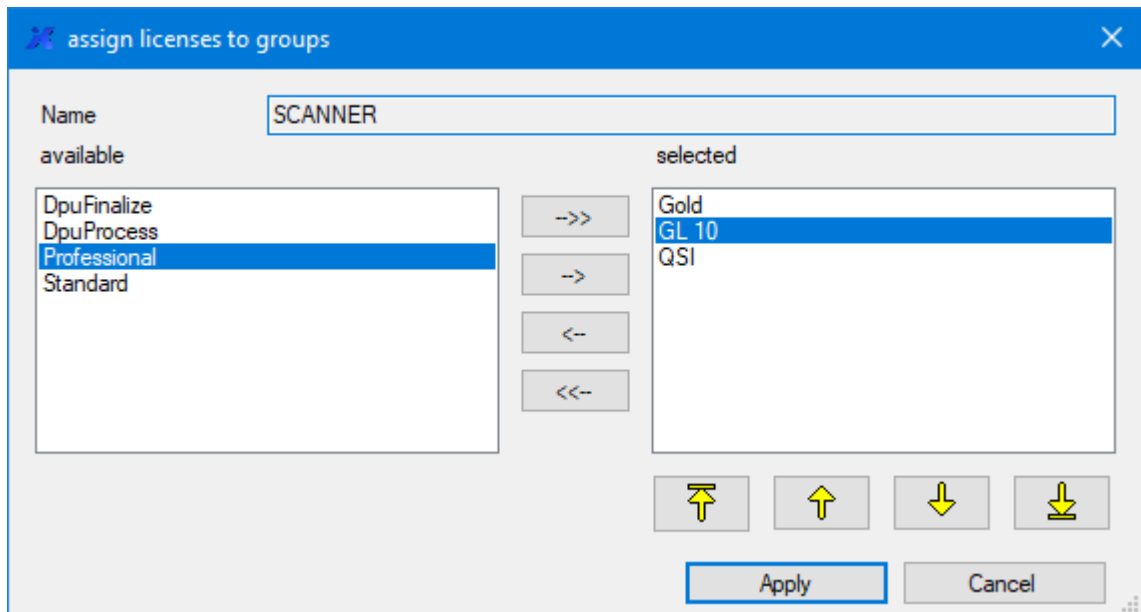
This button opens the [dialog](#) to manage the licenses listed.

See also [Group management](#), [Groups](#), [Stations](#) and [Profiles](#).

2.4.5.4.1 Lizenzen hinzufügen

In order to be able to influence the order of the assignment, the entries in this list can be moved so that, for example, it can be determined whether the highest or the lowest license is assigned first.

In diesen Dialog können Sie Lizenzen zu einer Stationsgruppe hinzufügen und entfernen.



Lizenzen zu Stationsgruppen hinzufügen

Im oberen Feld ist der Name der Stationsgruppe angegeben. Darunter findet sich links die Spalte der **verfügbaren** Lizenzen und rechts die Namen der **selektierten** Lizenzen, die bereits dieser Gruppe zugeordnet wurden.

Dabei gilt:

Die Lizenzen werden nach der Reihenfolge in der Liste von oben nach unten vergeben; im obigen Beispiel erst Gold, dann Gold Limited 10, d.h. wenn alle Lizenzen einer Sorte belegt sind wird die nächst niedrigere Lizenz vergeben.



Die Schaltflächen zwischen den Listen dienen dem Hinzufügen bzw. Entfernen einer oder aller Profile.

Beim Entfernen werden Lizenzen nur aus dieser Liste genommen und stehen den Stationen in dieser Gruppe nicht mehr zur Verfügung. Sie verbleiben aber auf dem DpuServer und können in anderen Gruppen genutzt werden.

Um zu vermeiden, dass Station während des Scannens ihre Lizenz verlieren, sollten Sie mit dem Entfernen warten bis allen Stationen sich [abgemeldet](#) haben.



Mit diesen Schaltflächen kann die Reihenfolge der Lizenzen geändert werden, je höher die Zeile steht, desto früher wird sie verteilt.



Mit diesen Schaltflächen kann die Reihenfolge der Lizenzen geändert werden, je tiefer die Zeile steht, desto später wird sie verteilt.

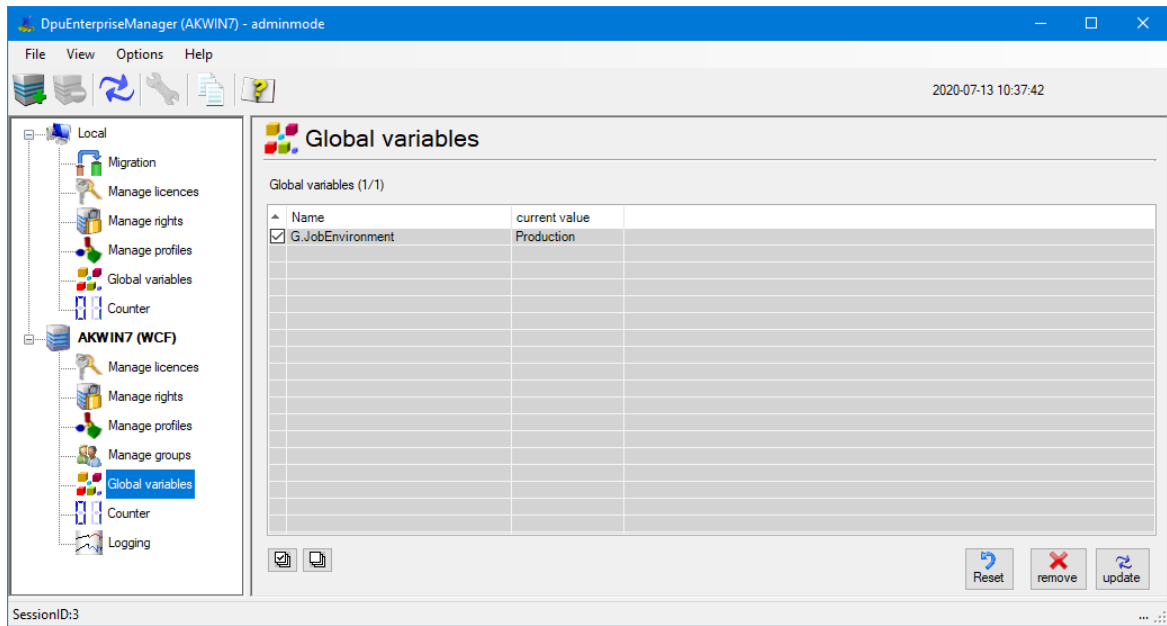
Siehe auch [Lizenzen](#) und [Gruppenverwaltung](#)

See also [Profiles](#) and [Group management](#).

2.4.6 Global Variables

This node is only visible [in administration mode](#). The property page is used to display, reset and remove global strings. Global strings can only be created, set and evaluated **in the scanning program only**. They serve to keep certain values the same for all operators, e.g. the distinction between a test and production environment.

The page shows a [table](#) and below it some [buttons](#).



Global text variables

See also [Local Profiles](#), [DpuServer Management](#), [Server Status](#), [Licenses](#), [Rights](#), [Groups](#) and [Logging](#). Furthermore, for [Administration Mode](#) see [Counters](#).

2.4.6.1 Columns

The table for the global variables shows these columns:

| Column/Symbol | Meaning |
|---------------|---------|
|---------------|---------|

| | |
|--------------|---|
| Name | Name of the variables in the program. There please use the usual decorated spelling there, e.g. % (G.MyVariable). |
| Value | Shows the current content of the variable. |

See also [variable management](#), [variable management without a DpuServer](#) and [server administration](#),

2.4.6.2 Buttons

Below the list two buttons allow to select or deselect the list entries.



Selects all entries

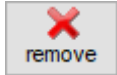


Removes the check mark from all entries.

Furthermore there are these buttons:



Assigns an empty character string to the variable.



Removes the variable from the list



Updates the list.

See also [server management](#), [variables management](#) and [locale variables management without a DpuServer](#).

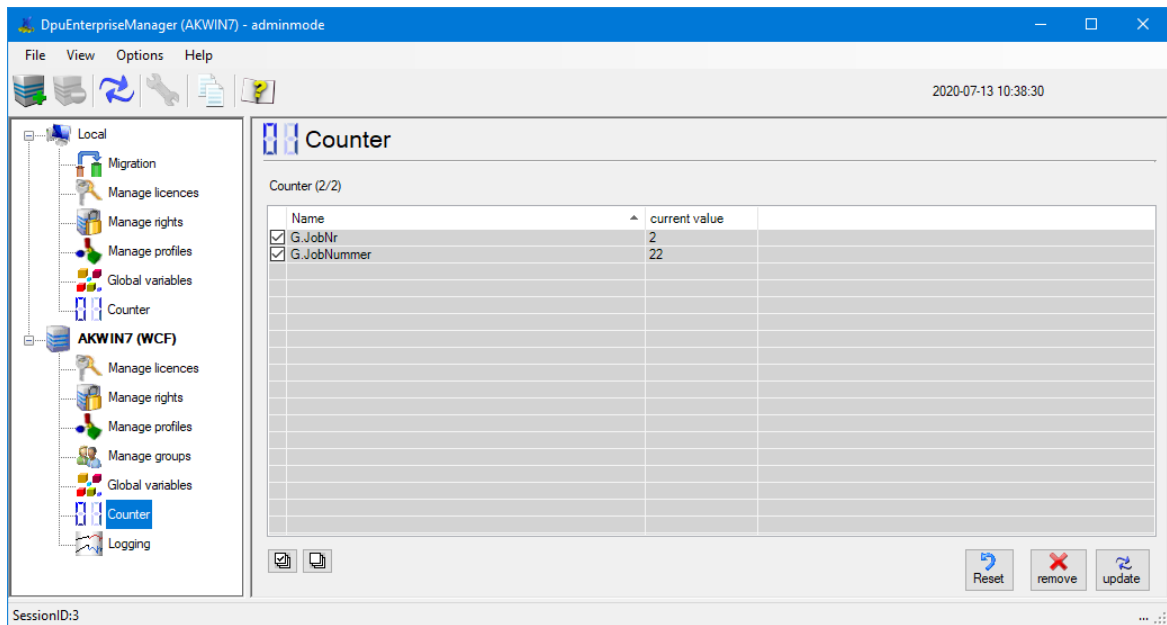
2.4.7 Global Counters

This node is visible in [administration mode](#) only. The property page is used to display, reset and remove global counters.

Global counters can only be created, set and evaluated **in the scanning program only**. They are used to keep certain counters the same for all operators, e.g. a company-wide valid job number .

After querying the counter from the program, the counter is **automatically increased** by one.

The page shows a [table](#) and below it some [buttons](#).



Global counters

See also [Local Counters](#), [DpuServer Management](#), [Server Status](#), [Licenses](#), [Rights](#), [Profiles](#), [Groups](#) and [Logging](#). Furthermore, for [Administration Mode](#) see [Variables](#).

2.4.7.1 Columns

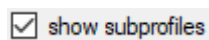
The table for the global variables shows these columns:

| Column/Symbol | Meaning |
|---------------|---|
| Name | name of the variable in the program. There please use the usual decorated spelling there, e.g. % (G.MyCounter). |
| Value | Shows the current value of the variable |

See also [variable management](#), [variable management on the DpuServer](#) and [server administration](#),

2.4.7.2 Buttons

Above the list this checkbox toggles between showing profiles only and all profiles, including subprofiles.



If the check box is not selected, only the task profiles in the specified path are displayed. Activating the check box extends the display to all sub-profiles that are used in the task profiles.

Below the list two buttons allow to select or deselect the list entries.



Selects all entries

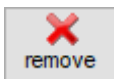


Removes the check mark from all entries.

Furthermore there are these buttons:



Resets the counter to zero.



Removes the counter from the list.



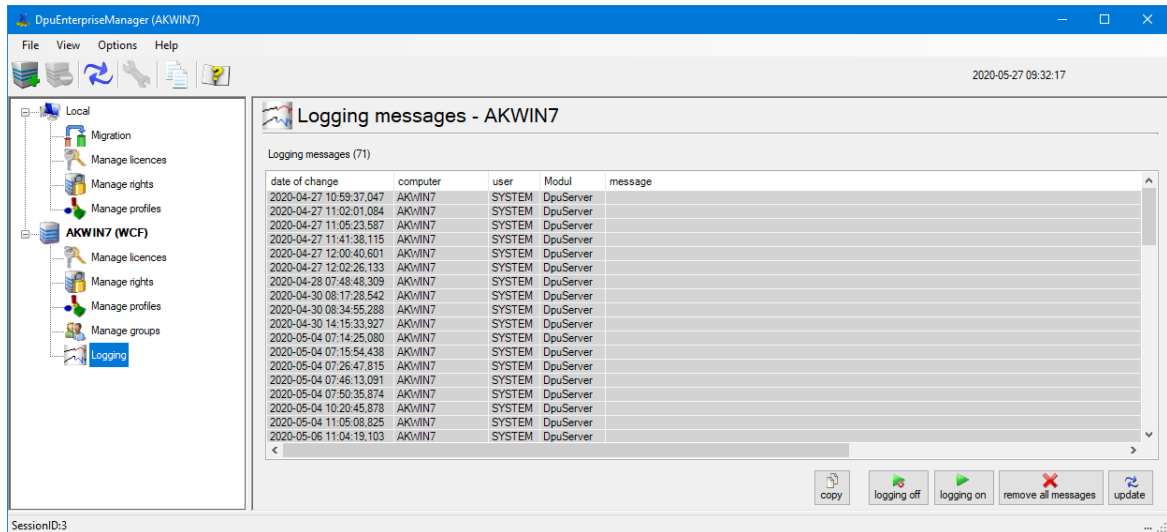
Updates the list view.

See also [server management](#), [counters management](#) and [local counters management without a DpuServer](#).

2.4.8 Logging

This node is visible in [administration mode](#) only. The property page is used to switch on and off the log output generated by the DpuServer service. Logs can be copied and deleted as well.

The type, location and scope of the logging can be set with administrator rights **in the control panel** only.



Logging of the DpuServer

When this node is selected a [table](#) will be shown to right and some [buttons](#) also.

See also [Local Profiles](#), [DpuServer Management](#), [Server Status](#), [Licenses](#), [Rights](#), [Profiles](#) and [Groups](#). Furthermore, for [Administration Mode](#) see [Variables](#) and [Counters](#).

2.4.8.1 Columns

The table for the logging shows these columns:

| Column/Symbol | Meaning |
|----------------|--|
| date of change | A date and time stamp, the digits behind the comma are milliseconds. |
| computer | the name of the computer which has generated the message. |
| user | the currently logged on user |
| modul | usually "DpuServer" |
| message | errors and messages of the internal workflow |

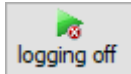
See also [variable management](#) and [server administration](#),

2.4.8.2 Buttons

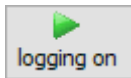
Furthermore the page uses these buttons:



Copies the content of the table to the clipboard.



The logging is switched off, temporarily. After the next restart of the server, the base settings from the registry are valid again.



The logging is switched on, temporarily. After the next restart of the server, the base settings from the registry are valid again.



The logging files are deleted

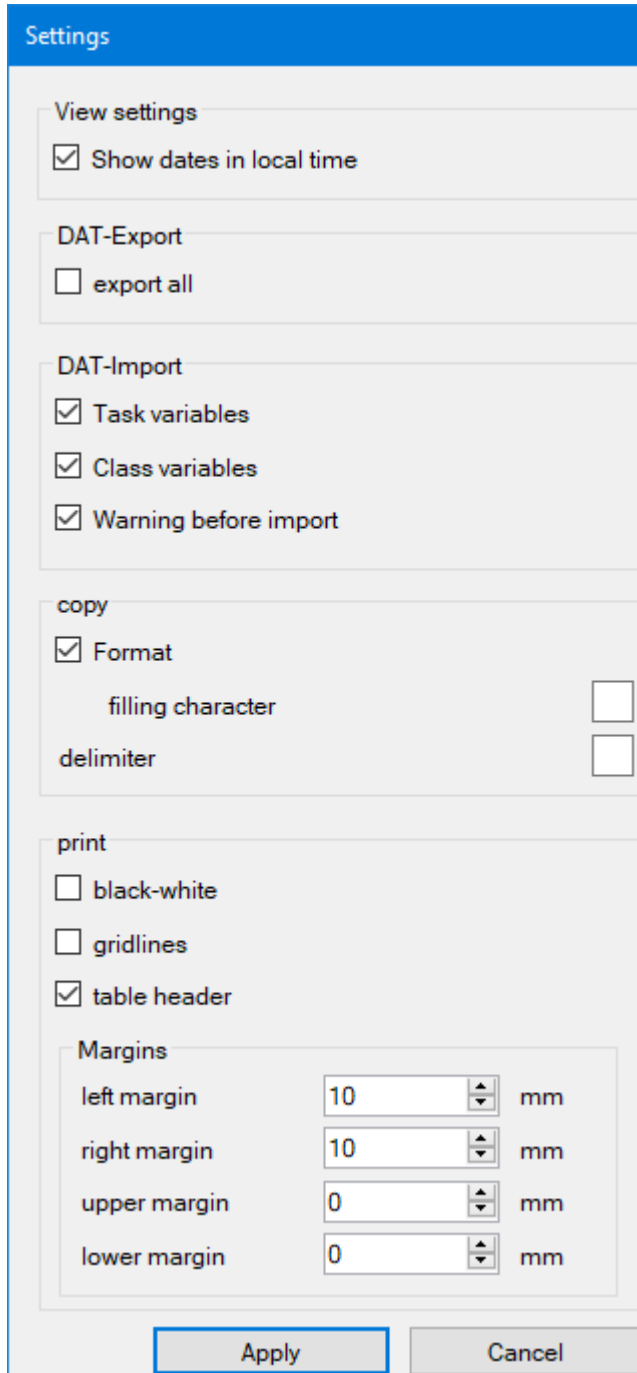


Shows newly added messages

See also [columns](#) and [logging](#)

2.5 Program Settings

In this dialog settings can be made for view, copy and printing.



Program settings

View

Specifies whether the time should be displayed in local format or in UTC. This makes sense if the connected stations are in different time zones.

| | |
|-------------------|--|
| DAT-Export | <p>If this option is activated when creating a DAT file, all files will be included. Also those ones which are generated after the installation of the program. For example broker output files or files that are used for or created by PlugIns.</p> |
| DAT-Import | <p>DpuScan variables (%-Codes) that refer to a task or basic profile, formerly called "class", are normally read in during the DAT import. If you want to prevent this, e.g. to keep counter values, these options should remain switched off.</p> <p>The Warn option shows the corresponding warning when task or basic variables are read.</p> |
| Copy | <p>Specifies how the contents of the tables should be copied to the clipboard as text.</p> <p>Format specifies that the individual values are brought to the same length by padding.</p> <p>Filling character specifies which character should be used for this. The default is the space.</p> <p>Delimiter specifies with which character should separated the values from each other, the standard is the vertical line.</p> <p>Column headings and a dividing line in front of the lines with the data can be set when printing.</p> <p>Not all tables can be copied to the clipboard.</p> |
| Print | <p>Apart from the option table headings, see copy, no other of these settings has a function in this program version.</p> <p>Simply, it is not possible to print anything.</p> |

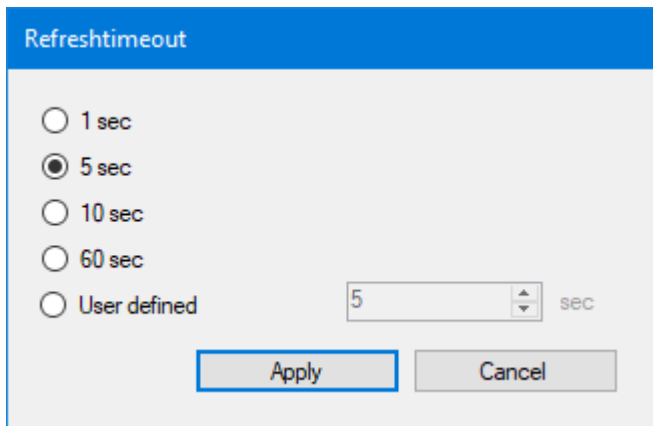
Siehe auch [DpuEnterpriseManager](#) bzw. [Menü](#).

2.6 Options

The options relate to the currently selected node in the tree view. If there are no options, this menu item is blocked.

[Locale->Status](#) and [Server->Status](#)

The intervals at which the data are queried can be set here.



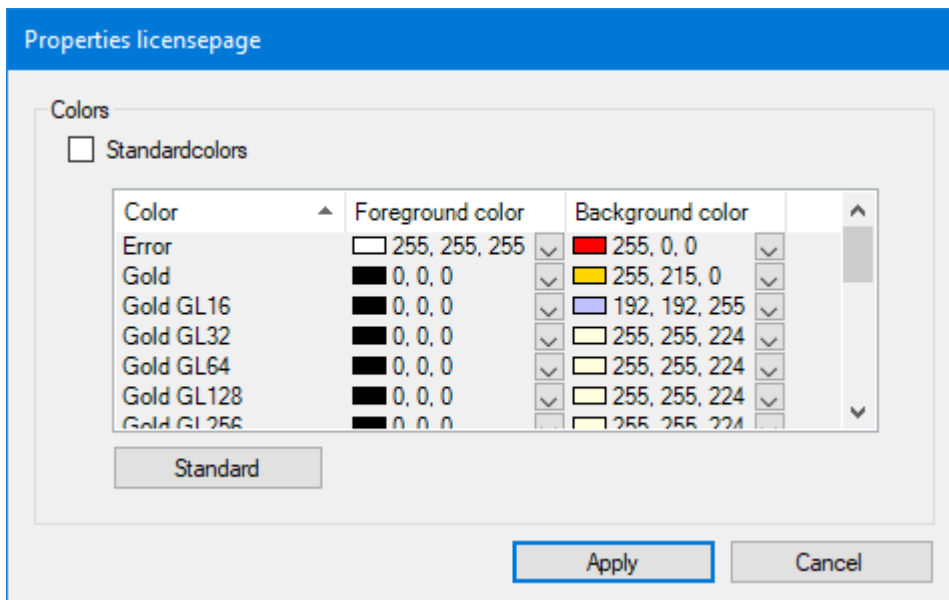
Refresh Timeout

[Local->Migration](#)

Opens the standard Windows dialog to search the migration source folder.

[Local->License Management](#) and [DpuServer->License Management](#)

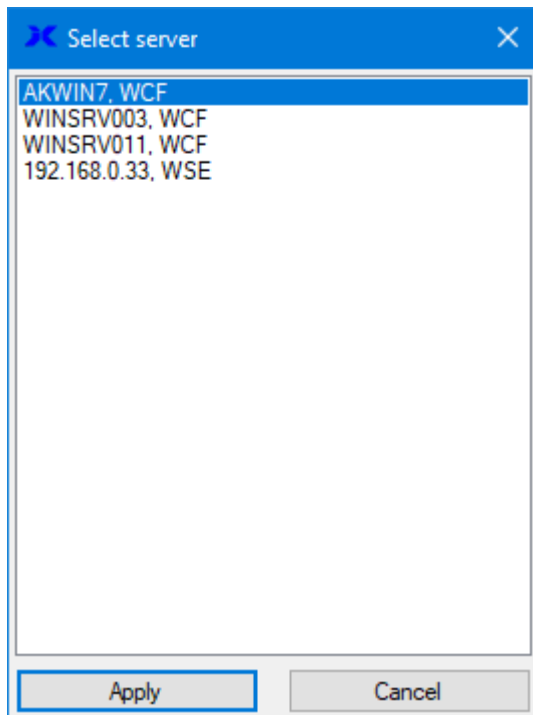
Opens a dialog box to specify the color settings for the license types.



Properties of the License Page

[Local->Right Management](#)

Opens the Dialog to [select the corresponding DpuServer](#) to which the rights should be published



Selection of the DpuServer to adjust with.

See also [toolbar](#) and [DpuEnterpriseManager](#).

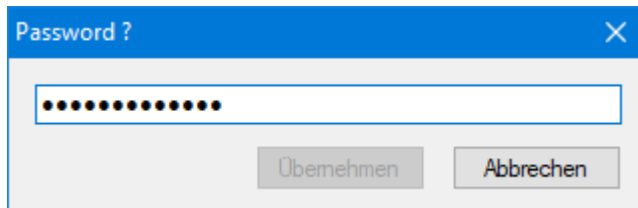
2.7 Other

2.7.1 Administration mode

By specifying the command line parameter ADMIN, the DpuEnterpriseManager can be started in administration mode.

In this mode, more information is displayed, but there are no additional setting options.

At the start you will be asked for a password:



If you do not know the password, contact your administrator.

The administration mode affects the display of the counters and variables and the local license and rights management.

Please do not confuse the administration mode with the start of the program with [administrator rights](#).

2.7.2 Command Line Parameters

These command line parameters can be used to control the program start:

| Parameter | Meaning |
|-----------|---------|
|-----------|---------|

PAGE:<paramet Selection of a given node in the tree and the corresponding page:
er>

| <parameter> | Node/Page |
|-------------------|---|
| LOCAL.HOME | Most upper node for the Status of a local server. |
| LOCAL.LICENSE | Page for the license management of a local server |
| LOCAL.MIGRATION | Page for the migration of older profiles to a local server. |
| LOCAL.RIGHTS | Page for the rights management of a local server. |
| LOCAL.PROFILES | Page for the profile management of a local server. |
| <server>.HOME | Most upper node for the Status a server. |
| <server>.LICENSE | Page for the license management of a server. |
| <server>.RIGHTS | Page for the rights management of a server. |
| <server>.PROFILES | Page for the profile management of a server. |

<server>.GROUPS Page for the [group management](#) of a server.

<server>.LOGGING Page for the [Logging](#) on the server

<server> stands for the name of the server.

Otherwise the keyword „FIRST“ may be used to go to the corresponding page of the first server, if there is more than one.

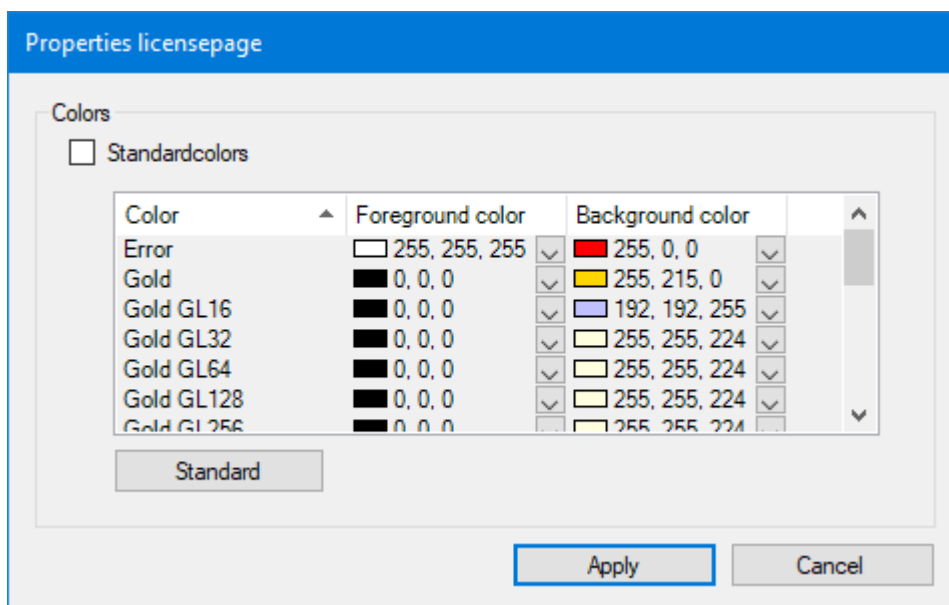
NEWSERVER Connects to a new DpuServer

<server>

<server> has the syntax :<servername>|<port>|<[tcp,http]>

2.7.3 Colors

In this dialog the colors for the different license types can be given:



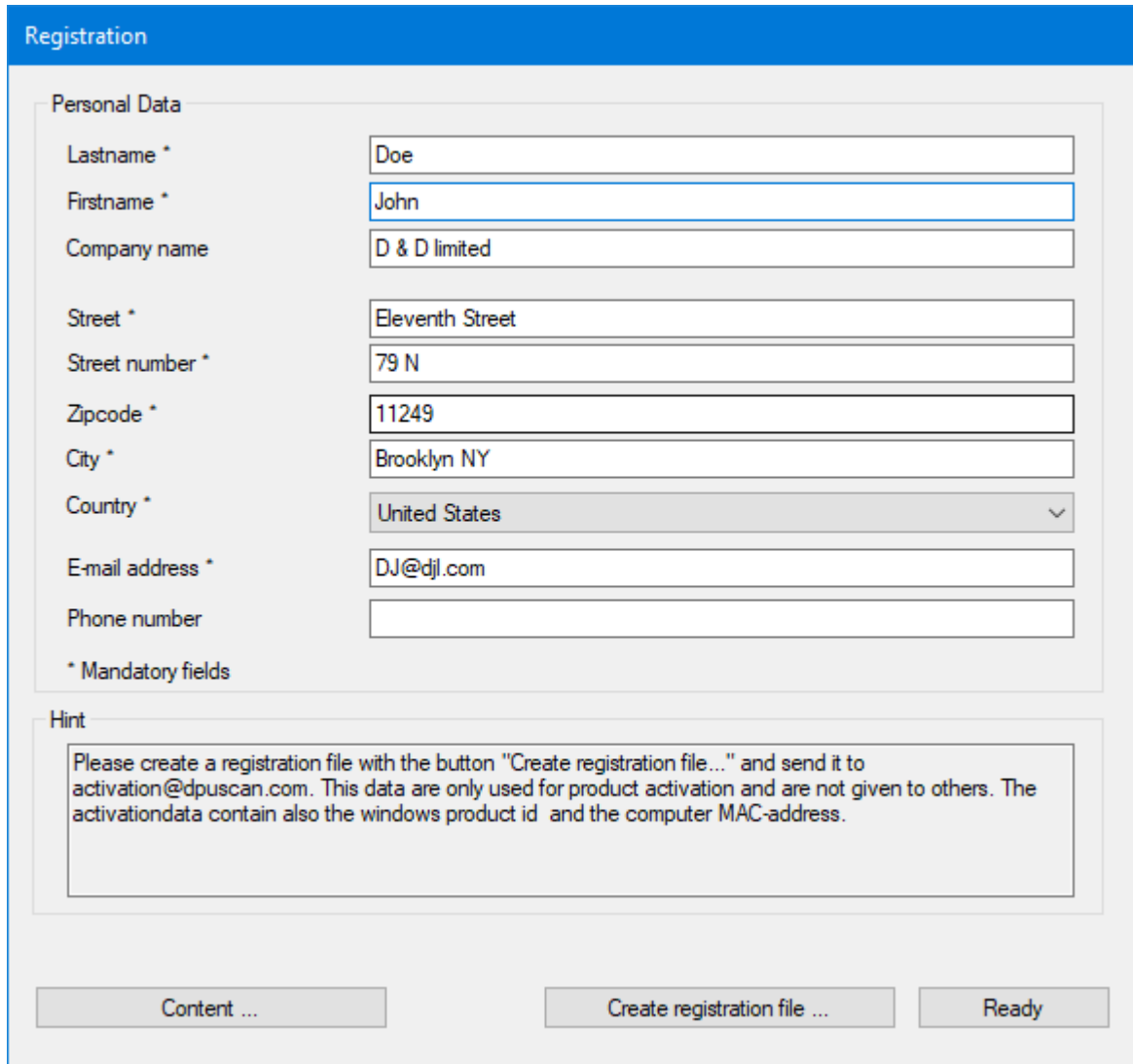
2.7.4 Registration

With this dialog a registration of the product can be requested. To do this, fill in the fields in this dialog and send the resulting file to activation@dpuscan.com.

You will then receive a **product key**. Entering this key allows you to use and try out the program for an agreed period of time.

After this period, you can request an **activation code** that allows you to continue using the program without restrictions.

This type of license is bound to the computer and cannot be transferred.



The image shows a 'Registration' dialog box with a blue header. It contains a 'Personal Data' section with several text input fields and a dropdown menu. The fields are filled with the following information: Lastname: Doe, Firstname: John, Company name: D & D limited, Street: Eleventh Street, Street number: 79 N, Zipcode: 11249, City: Brooklyn NY, Country: United States, E-mail address: DJ@djl.com, and Phone number: (empty). A note below the fields states '* Mandatory fields'. Below this is a 'Hint' section with a text box containing instructions: 'Please create a registration file with the button "Create registration file..." and send it to activation@dpuscan.com. This data are only used for product activation and are not given to others. The activationdata contain also the windows product id and the computer MAC-address.' At the bottom of the dialog are three buttons: 'Content ...', 'Create registration file ...', and 'Ready'.

| Field | Value |
|------------------|-----------------|
| Lastname * | Doe |
| Firstname * | John |
| Company name | D & D limited |
| Street * | Eleventh Street |
| Street number * | 79 N |
| Zipcode * | 11249 |
| City * | Brooklyn NY |
| Country * | United States |
| E-mail address * | DJ@djl.com |
| Phone number | |

* Mandatory fields

Hint

Please create a registration file with the button "Create registration file..." and send it to activation@dpuscan.com. This data are only used for product activation and are not given to others. The activationdata contain also the windows product id and the computer MAC-address.

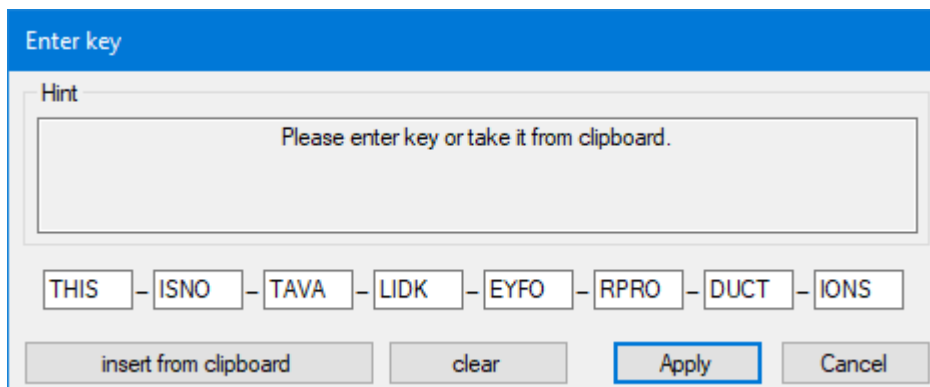
Content ... Create registration file ... Ready

Registration Request

The button **Create registration file** asks for the storage location for this file, the button **content** shows the file.

2.7.5 Entering a key

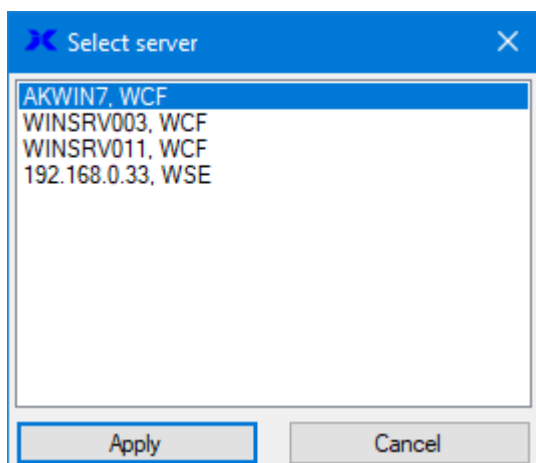
This dialog is used to enter a key. Keys can unlock certain functions of the program. They can be limited in time.



If a valid key has been copied already to the clipboard before opening this dialog it will be displayed then immediately.

2.7.6 Select a DpuServer for publishing

In this dialog it can be specified on which DpuServer the marked local profiles are to be published.

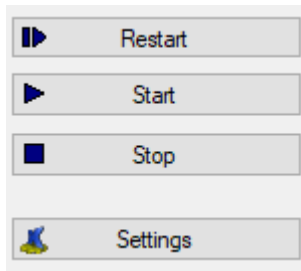


However, this has no influence on the DpuServer which is used for the adjustment of profiles! This one can only be set during installation or later when you call up the "DpuServer Settings" from the control panel.

2.7.7 Start the Program with Administrator Rights

As with any program, you can also start DpuEnterpriseManager as an administrator, unless this is prohibited by a group policy. This option is usually only offered when the shift key is pressed in the context menu of the program icon.

If the program is also started in [administration mode](#), it is possible to stop and restart the DpuServer and DpuLocalServer services:



These switching elements are offered to you for the "Local" nodes and for the DpuServer that is running on this computer.

Remote DpuServers running on other computers cannot be stopped.

Referenzhandbuch DpuEnterpriseManager

© Janich & Klass Computertechnik GmbH

Wuppertal, Germany, 2024