



# DpuScan

Janich & Klass  
Computertechnik GmbH



## DpuScan 7 Reference Manual

DpuLocalServer

## Copyrights

© 1997 to 2024 © Janich & Klass Computertechnik GmbH. All rights reserved.  
Printed in Germany. The information contained in this documentation is the property of © Janich & Klass Computertechnik GmbH, Wuppertal. Neither receipt nor possession hereof confers or transfers any right to reproduce or disclose any part of the contents hereof, without the prior written consent of Janich & Klass, Wuppertal

## Trademarks

The DPU logo is a registered trademark of © Janich & Klass Computertechnik GmbH. All other product names and logos are trademarks or registered trademarks of their representative companies.

## Disclaimer

The instructions and descriptions in this manual were accurate at the time of this manual's printing. However, we reserve the right to alter the description and/or the product at anytime without prior notice. As per the actual state of software technique it is not possible to develop programs that will work trouble-free under all conditions and in any configuration. © Janich & Klass Computertechnik GmbH assume no liability for damages incurred directly or indirectly from errors, omissions, or discrepancies between this manual and the product.

## Actuality

It may happen that a more recent version of this manual for DpuScan is available for download from the Internet. Therefore, it is recommended that you should compare the version by means of the date printed on this page with the version on the Internet. You should please use the most up-to-date version of the manual.

## Table of Contents

<b>1 DpuLocalServer</b>	<b>4</b>
1.1 Installation .....	5
1.2 WorkingMode .....	7
1.3 Interfaces .....	8

# 1 DpuLocalServer

DpuLocalServer for DpuScan Version 7

The DpuLocalServer is a service that is installed together with DpuScan. It is used to check the licensing of the scanning program, save the profiles and, if available, exchange them with the DpuServer.

[Installation](#)

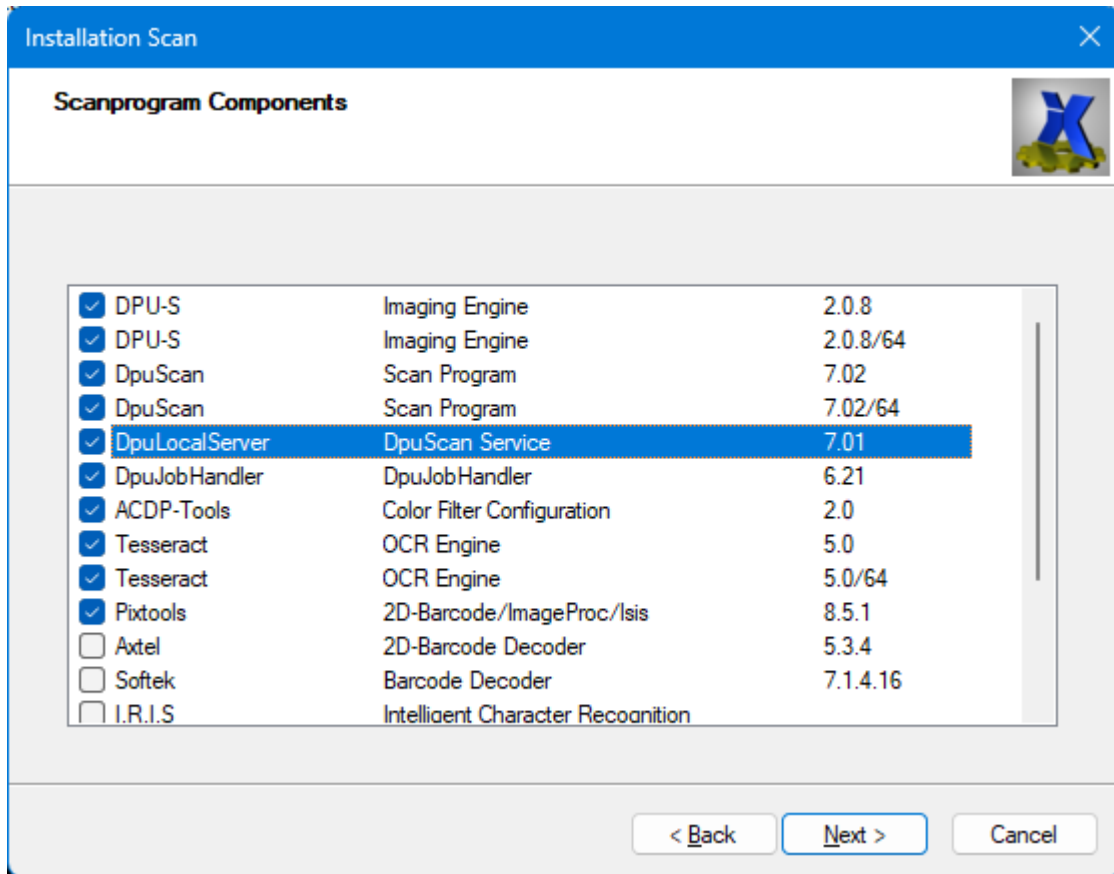
[Working Mode](#)

[Interfaces](#)

State 2024

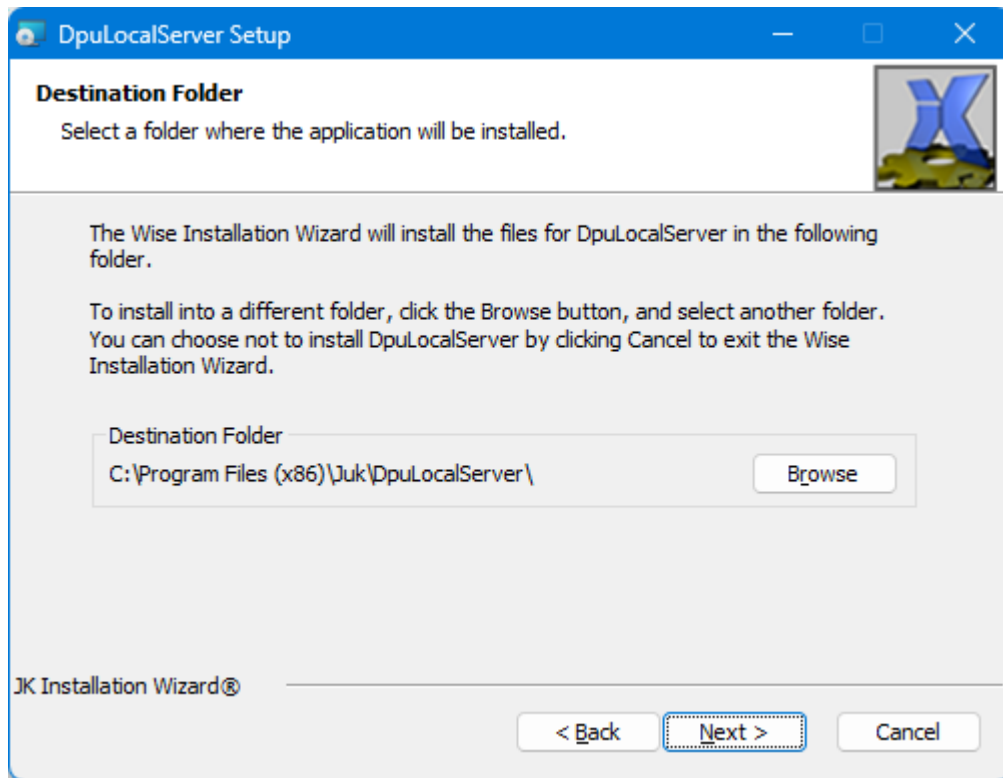
## 1.1 Installation

Up to version 6.1, the DpuLocalServer was installed together with the scanning program in the same directory. Since version 6.5 it has been a separate point during the installation.



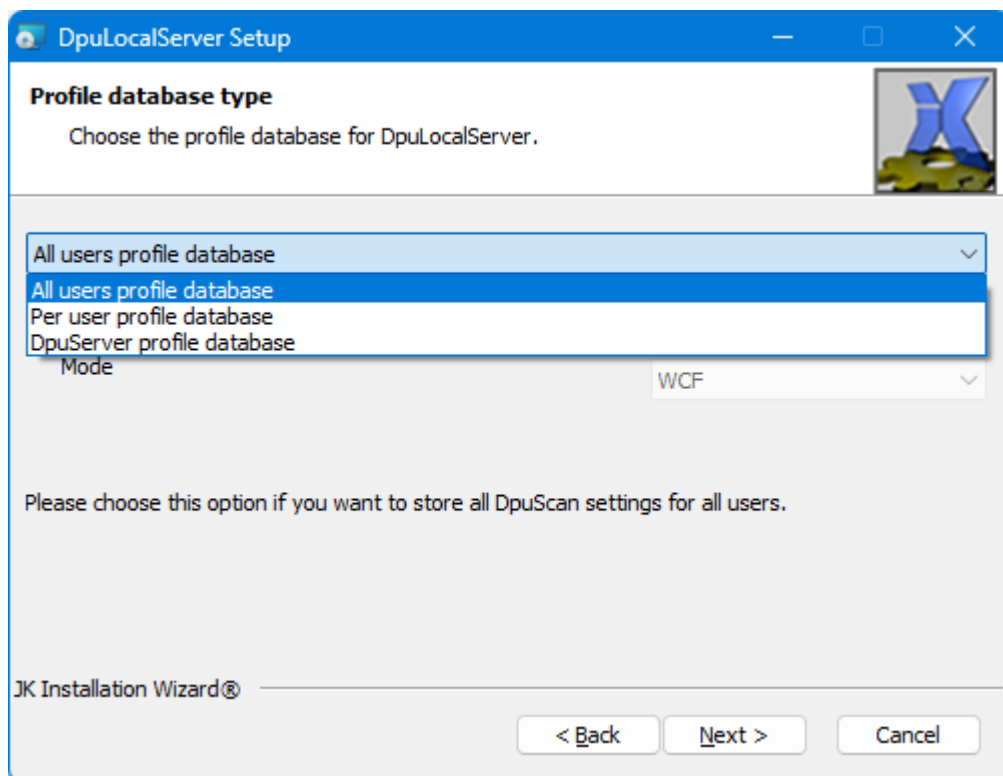
*DpuLocalServer at Installation*

It can be used by the 32Bit and 64Bit versions. It is therefore recommended to install it in the suggested separate directory:



*Target folder at installation*

During installation you will be asked how the profiles should be stored:



*Type of profile storage*

If you have a DpuServer, enter it here. If not, shared profile storage is the most commonly used type of storage.

If different people have access to the scanning station and need to perform different tasks, separate storage is recommended.

A later change is possible, e.g. if a DpuServer is added later, but all profiles should be backed up beforehand. You can find more information about this in the description of the DpuEnterpriseManager.

## 1.2 WorkingMode

The DpuLocalServer determines the type of licensing when the program starts. Possible are:

- a USB dongle
- a XINO scanner
- a software key
- the connection to a DpuServer

The scope of the program's services is determined by the license; please compare the DpuScan manual.

The license is requested at regular intervals during operation and is retained for a short time after the program ends to enable a quick restart.

Furthermore, the DpuLocalServer saves and loads all profiles and rights that the scanning program uses or changes.

The storage takes place for all users in the local data area.

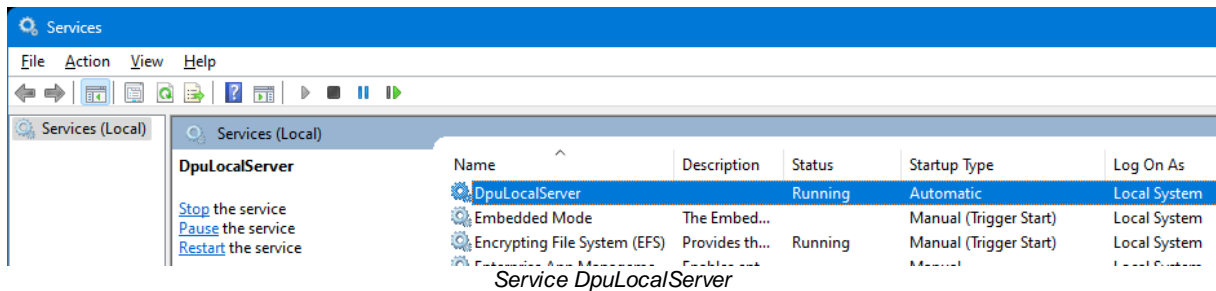
## 1.3 Interfaces

### Graphical Interface

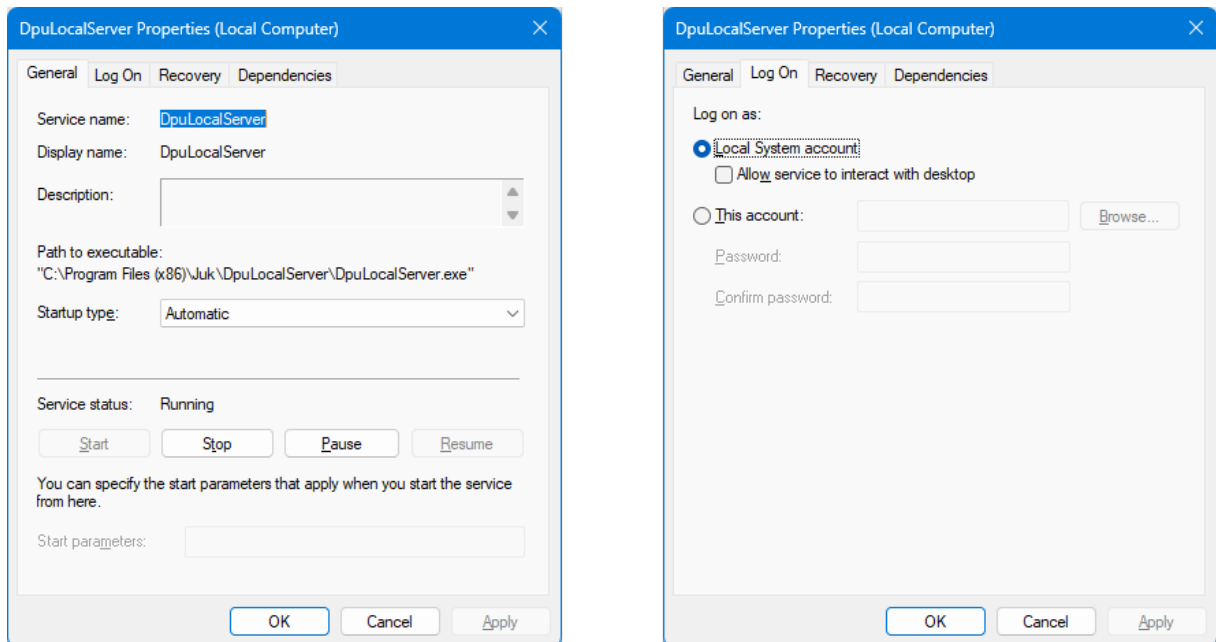
The service does not have its own graphical interface. The configuration is done using the [DpuEnterpriseManager](#) and the [DpuControlPanel](#).

In addition, the DpuLocalServer can be displayed, stopped and started using the usual means of the operating system:

After starting it will appear in the list of services:



During installation, it is set up so that it starts automatically when the computer starts and uses the local system account.

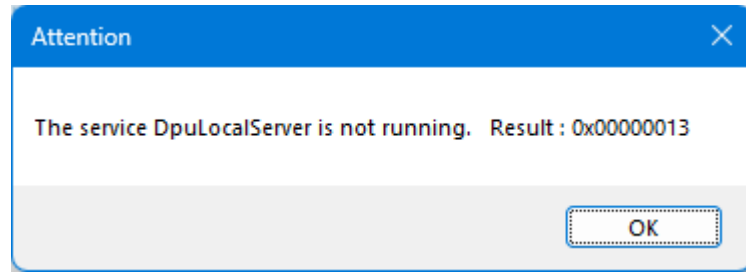


Properties of service DpuLocalServer

A manual start is not recommended, but in exceptional cases it may be necessary to start the service "delayed".

If the service is not running, DpuScan reports this when the program starts:





*Error: Service wasn't started*

Reference Manual DpuLocalServer

© Janich & Klass Computertechnik GmbH

Wuppertal, Germany, 2024