



DpuScan

Janich & Klass
Computertechnik GmbH



DpuScan 7 Reference Manual

DpuServer

Copyrights

© 1997 to 2024 © 2024 Janich & Klass Computertechnik GmbH, Wuppertal, Germany. All rights reserved.

Printed in Germany. The information contained in this documentation is the property of © 2024 Janich & Klass Computertechnik GmbH, Wuppertal, Germany, Wuppertal. Neither receipt nor possession hereof confers or transfers any right to reproduce or disclose any part of the contents hereof, without the prior written consent of Janich & Klass, Wuppertal

Trademarks

The DPU logo is a registered trademark of © 2024 Janich & Klass Computertechnik GmbH, Wuppertal, Germany. All other product names and logos are trademarks or registered trademarks of their representative companies.

Disclaimer

The instructions and descriptions in this manual were accurate at the time of this manual's printing. However, we reserve the right to alter the description and/or the product at anytime without prior notice. As per the actual state of software technique it is not possible to develop programs that will work trouble-free under all conditions and in any configuration. © 2024 Janich & Klass Computertechnik GmbH, Wuppertal, Germany assume no liability for damages incurred directly or indirectly from errors, omissions, or discrepancies between this manual and the product.

Actuality

It may happen that a more recent version of this manual for DpuScan is available for download from the Internet. Therefore, it is recommended that you should compare the version by means of the date printed on this page with the version on the Internet. You should please use the most up-to-date version of the manual.

Table of Contents

1 DpuServer	4
1.1 Installation	4
1.2 Operating	5
1.3 Interfaces	6

1 DpuServer

DpuServer Version 1.9

The DpuServer is a utility that allows the distribution of profiles, licenses and rights to different stations with a DpuLocalServer.

The DpuServer can be purchased as a separate module.

A Microsoft® SQL Server is required to store the data.

The free version Microsoft SQL Server Express is offered during installation, but it can be replaced with any other MS SQL Server.

[Installation](#)

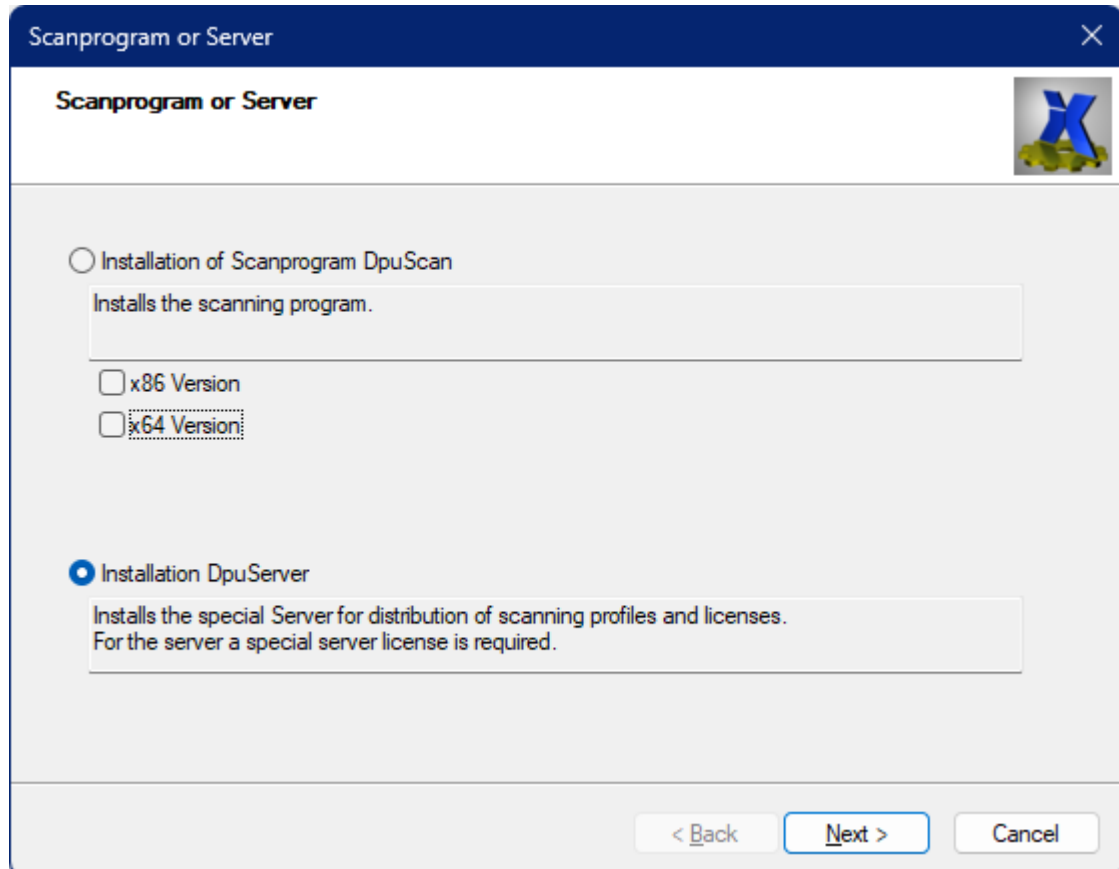
[Operation](#)

[Interfaces](#)

State 3/21/2024

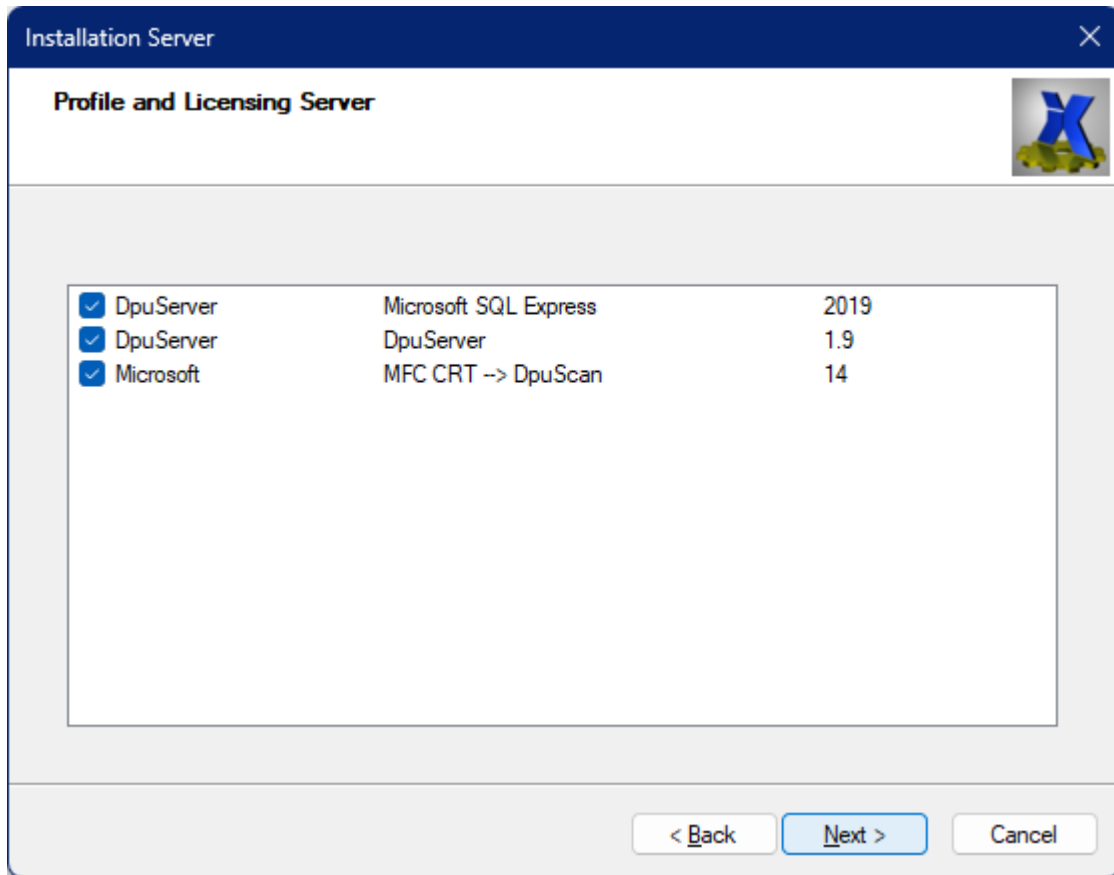
1.1 Installation

The DpuServer is usually installed from a DpuScan installation medium as an option to the scan program:



DpuServer Installation

Please install all components, the installation will notice if a component is already present and skip it:



DpuServer Components

Note: Some Microsoft components may require an update. If the installation does not work immediately, please install ONLY Microsoft SQL Express and MFC CRT first. Then check for updates and restart if necessary. Then continue with the installation.

Note: Do not install the DpuServer on a scan station: If an error in the scanner requires a restart, then no DpuServer will be available at that time!

1.2 Operating

When installing a scan station, you can specify that the profile should be saved on a DpuServer. To do this, enter the name of the computer or the IP address. The specification "localhost" refers to your own PC. This setting can also be made later.

With the help of the [DpuEnterpriseManager](#) it can then be determined what the DpuServer should deliver: licenses, profiles and rights.

When the scan program is started, the required licenses are debited from the DpuServer and the assigned profiles and rights are fetched.

Communication takes place via the usual TCP/IP network protocol, i.e. it is also possible to specify a "remote" DpuServer, for which port 9091 must be enabled. The exchange of information then takes place in the so-called SOAP protocol. Since version 1.8 of the DpuServers, the Windows Communication Framework library (WCF) of the operating system has been used to enable a connection.

In general, server and client only communicate after the start if a scan profile is changed. Later, it is checked at certain intervals whether the client is still active or whether the license can be released. Conversely, the Client will stop after some time if it loses connection to the server.

The DpuServer uses a database for storing the information, this is determined with the help of a "connection string". This text specification contains the database provider to be used, the access data and the name of the DpuServer database. It can be set in the [DpuControlPanel](#).

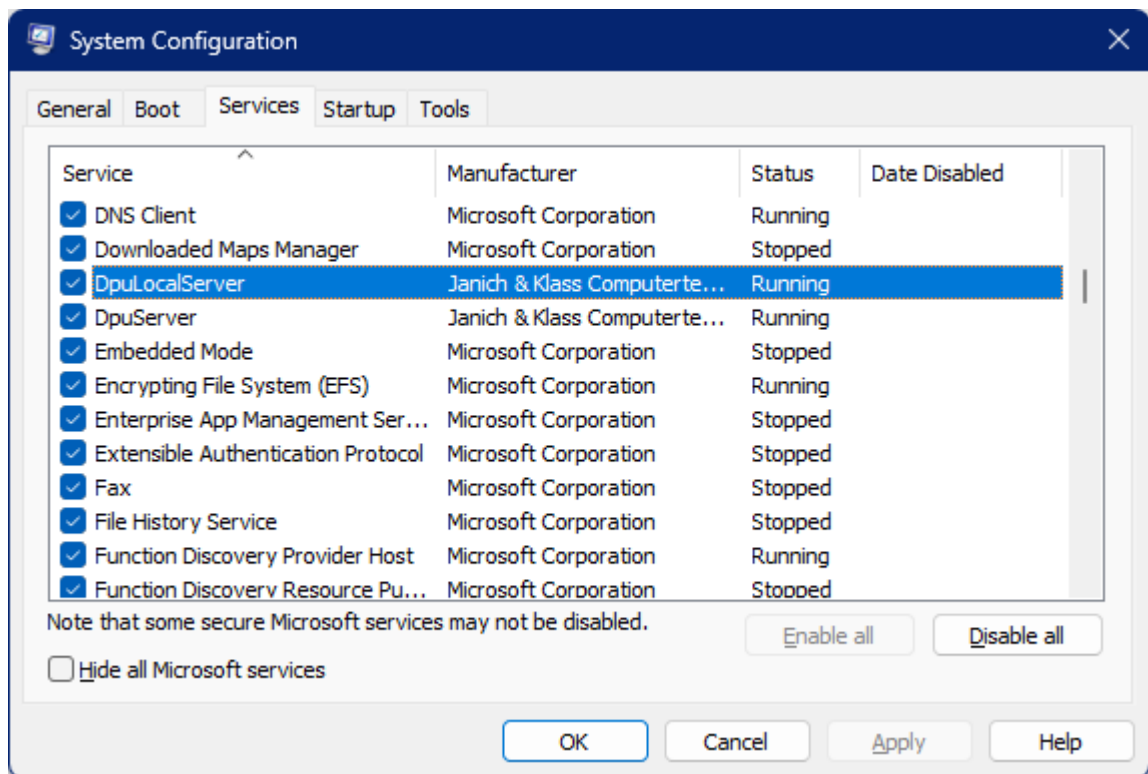
1.3 Interfaces

Graphic interface

The service does not have its own graphical interface. The configuration is done with the help of the [DpuEnterpriseManager](#) and the [DpuControlPanel](#).

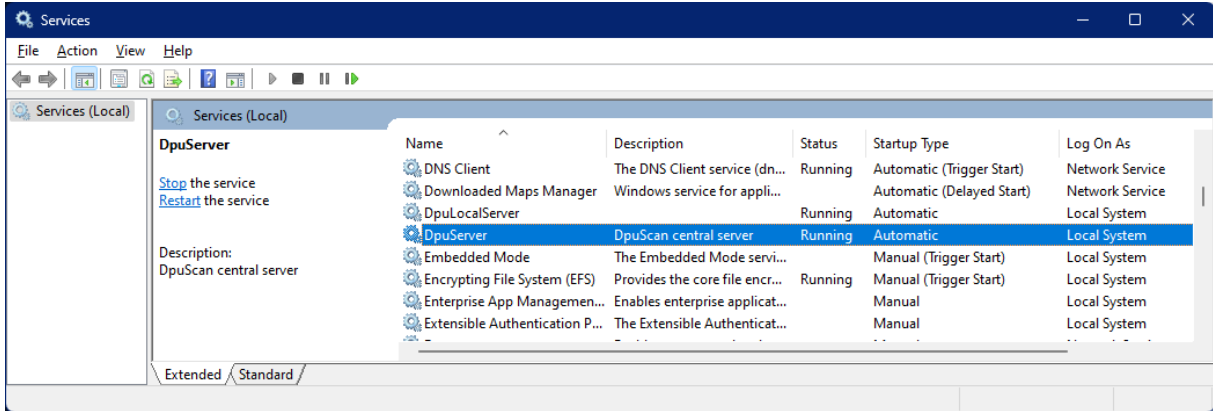
In addition, the DpuServer can still be displayed, stopped and started with the usual resources of the operating system:

The DpuServer is entered in the list of services to be started:



DpuServer in the System Configuration

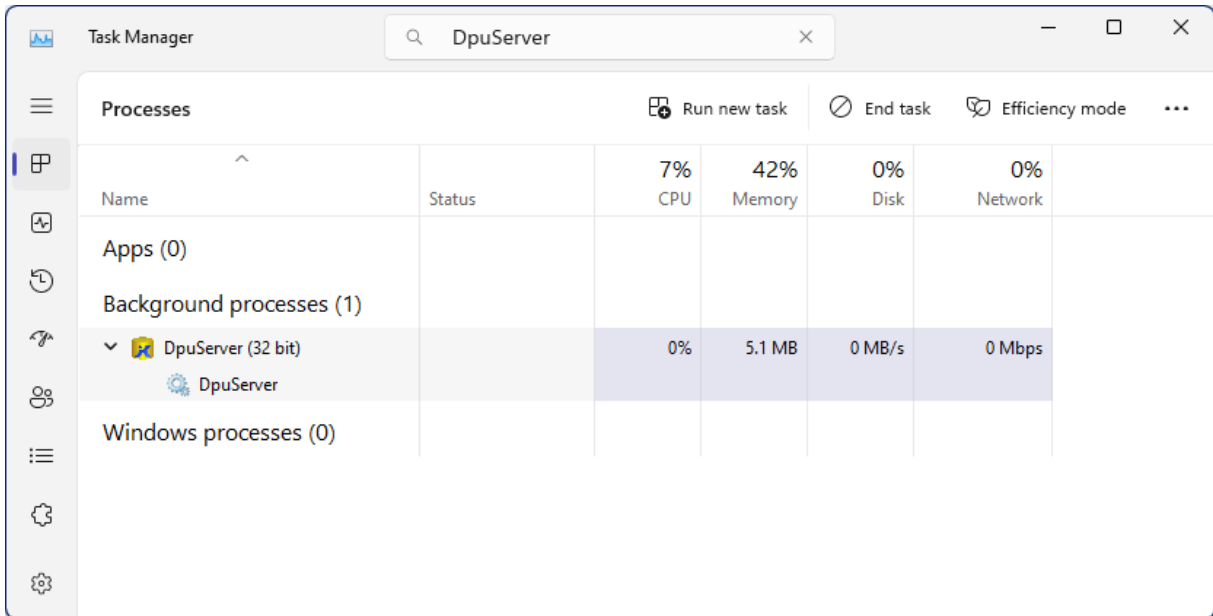
Once started, it will appear in the list of running services:



DpuServer in the list of services

In rare cases it may be necessary to start the DpuServer "delayed".

It is also listed as a background process in the task manager:



DpuServer in the Task Manager

Reference Manual DpuServer

© 2024 Janich & Klass Computertechnik GmbH, Wuppertal, Germany

Wuppertal, Germany, 2024